

# Defender®



**Compare  
for Yourself!**



Made in France

## Zodiac Wave 275 Rollup

Defender Item # 456195,  
456246 & 456741

Made in China

## Our Competitors PRU-3

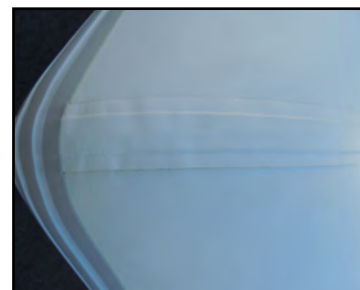


Welded

### Construction

Glued

The construction of any inflatable is very important as it affects the life expectancy and durability of the boat, especially for the buoyancy tube seams. PVC inflatables can be assembled using two methods, gluing and welding. Welding is a more advanced manufacturing process, and results in a stronger bond at fabric junctions & better air retention in the tubes. The Zodiac Wave 275 RU models have fully welded buoyancy tube seams, transom tube cuffs and accessories, such as oarlock pads, towing rings, and seat attachments.

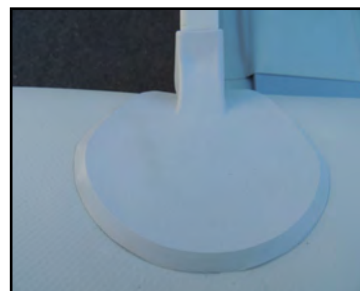


Welded

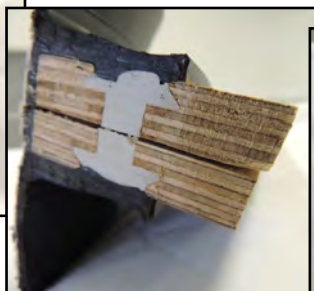
### Transom Attachment

Glued

The Zodiac Wave 275 RU also has welded rivets running through the transom, bonding the entire assembly together. Only Zodiac does this in France.



### Zodiac Wave 275 Rollup



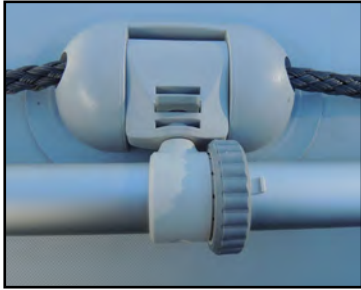
Locking

### Seats

Strapped

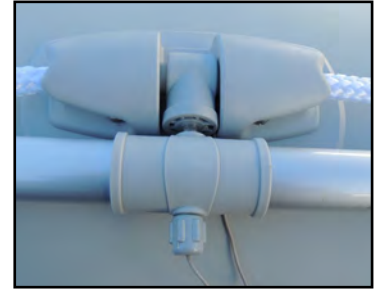
The Zodiac Wave 275 RU has designed a seat attachment system that allows the seat to be quickly installed or removed as needed with no deflation of the tubes required. The competition uses a traditional webbing system which the seat can slide into, but requires tube deflation for the seat to be installed or removed.





## Oars & Oarlock Shaft

The Zodiac Wave 275 RU uses a larger diameter (35mm), one-piece oar shaft which slides through the oarlock. The PRU-3 has a smaller diameter (32mm), two-piece shaft, which utilizes an oarlock that goes through a hole in the oar shaft.



## Carry Bag

The Zodiac Wave 275 RU includes a high quality, durable carry bag & a bow bag. To the right is the competitor's carry bag and no bow bag is included.



## D-Ring (Towing)

The Zodiac Wave 275 RU utilizes a larger, 50mm stainless steel towing ring with a reinforced and welded attachment patch. The competitor's towing ring, a smaller 35mm ring, is glued.





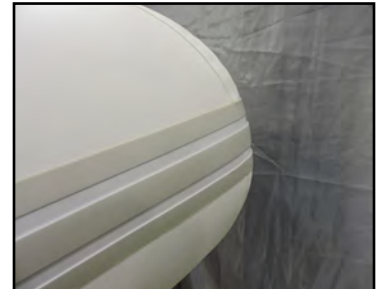
## Interior Cockpit Space

<p>69-1/2" Long x 26-1/2" Wide</p>	<p>66-1/4" Long x 25-1/4" Wide</p>
--	--



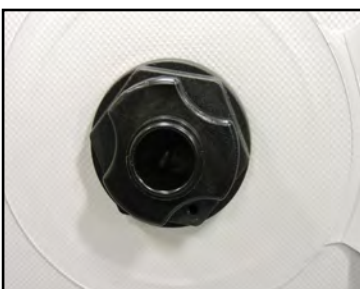
## Rubstrake

The Zodiac Wave 275 RU is constructed with a raised profile rubstrake, which offers added protection over the competition's low profile rubstrake.



## Inflation Valves

The Zodiac Wave 275 RU has two-piece, field serviceable valves for easy repair and maintenance. The PRU-3 uses Halkey Roberts valves, which requires a special tool for removal.





## Accessories

**Wave 275 Rollup Includes:** Carry Bag, Foot Pump, Oars, Seat, Owner's Manual, Repair Kit & FREE Bow Bag

**PRU-3 Includes:** Carry Bag, Foot Pump, Oars, Seat, Owner's Manual, Repair Kit



## Transom Plate

The Zodiac Wave 275 RU offers an aluminum outboard motor clamp plate, which wraps over the top of the transom, to offer superior protection versus commonly used plastic plates that only cover the front of the transom.



## Transom Bailer (Drain Plug)

The Zodiac Wave 275 RU has engineered a bailer which can be opened and closed from *inside* the boat. No more reaching down on the *outside of the transom* in order to pull a traditional plug out. This newer slide bailer incorporates a protective screen on the inside to help prevent debris from getting in and clogging the drain. It is also easily taken part to be cleaned if necessary.



## Foot Pump

**Bravo 7 Foot Pump** From Scoprega in Italy

**Low Grade Foot Pump**



**For more information, email [inflatables@defender.com](mailto:inflatables@defender.com)**