



Deckplate Kit

DP9906

For use with Whale Mk 5 Pump (BP0510)

For use with Mk V Double Action Underdeck Pump (MH5560)

INSTALLATION & USER INSTRUCTIONS

Thank you for purchasing this Whale® product.

For over 40 years Whale® has led the way in the design and manufacturer of freshwater and waste systems including:- plumbing, faucets, showers and pumps for low voltage applications. The company and its products have built a reputation for quality, reliability and innovation backed up by excellent customer service.

For information on our full product range visit: www.whalepumps.com

Read the following carefully before installation and use.

To the Fitter:

Check that the product is suitable for the intended application. Follow these installation instructions and ensure all relevant personnel read the points listed below. Also ensure that these operating instructions are passed on to the end user. The manufacturer cannot be held responsible for claims arising from incorrect installation, unauthorised modification or misuse of the product.

To the User:

Read the following instructions carefully.

1. APPLICATION & PRINCIPLES OF OPERATION

This product is designed to mount the Mk V Manual Bilge pumps (BP0510 & MH5560) in a bulkhead or underdeck orientation. Use for any other purpose is not recommended and is entirely at the user's risk.

2. WARNINGS

Please note that incorrect installation may invalidate the warranty.

3. PARTS LIST

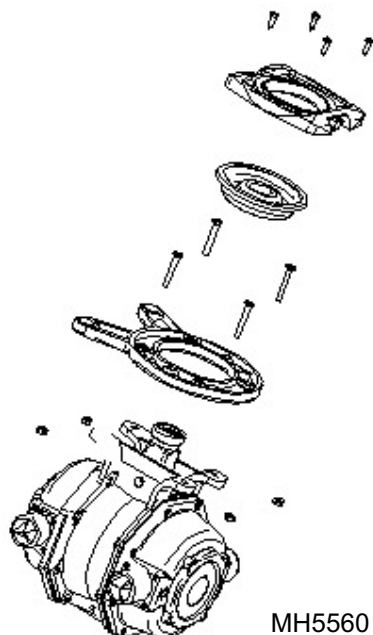
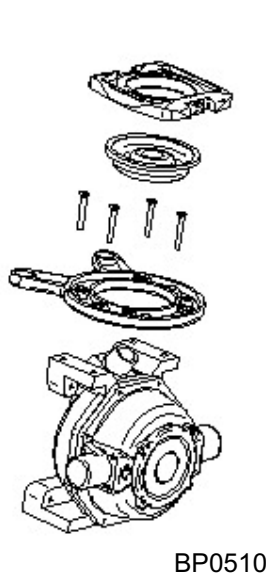
This Kit comprises of a Deckplate, Seal, Conversion Ring and Fixings.
The Whale® Diverter valve DV5606 is compatible with this pump (available separately).

4. OPTIONAL EXTRAS

Not applicable.

5. INSTALLATION

1. Note the markings on the conversion ring and check that the deck or bulkhead thickness is between a minimum of 13mm (1/2") and a maximum of 25mm (1") thick.
2. **For BP0510**
 - Firstly fit the conversion ring with the smooth side facing the pump.
 - Make sure the lugs (D) on the conversion ring face the back of the pump, and mount it temporarily to the pump using the holes marked A.
 - The pump rocker arm should be located in the centre of the large hole in the conversion ring. If the conversion ring is incorrectly fitted the handle will not operate properly.
3. **For MH5560**, firstly fit the conversion ring with the smooth side facing the pump. Mount it temporarily to the pump using holes marked B and C.
4. Select a suitable position where the pump can be operated efficiently and comfortably, allowing unrestricted movement of the handle. The top cover should be readily accessible in case the pump chokes. The pump will work in any part of the boat and the flow direction can be changed, to allow more installation options.
5. Once selected use the attached template or remove the conversion ring and use it as a template for drilling. Mark off and drill the large hole and the 4 small holes for mounting the deckplate. Round off the top edge of the large hole, to avoid damaging the seal when in operation.
6. To complete the installation:
 - Using the screws and nuts provided, fix the conversion ring firmly to the pump body.
 - Place the rubber seal over the pump rocker arm.
 - With the pump held underneath, place the deckplate and cover in position, and retain in position with the countersunk screws provided.



6. MAINTENANCE

Check the seal regularly for wear and tear and replace when necessary.

Additional deck plate seals are available in service kit AS3725.

7. WINTERIZING

If water is allowed to freeze in the system, serious damage to the pump and pipe work may occur. To avoid this damage, completely drain the water system, during low temperatures.

8. TROUBLE SHOOTING

To change the direction of the flow, remove the 8 (16 on MH5560) assembly screws and reassemble the pump as required. The valves should **not** be removed during this operation.

For BP0510, if the 2 lugs marked D on the conversion ring restrict the installation, they can be cut off.

When fitting the pump through the bulkhead, position the deck plate with the lid at the top.

Should the pump and deck plate move during the operation, check that the screws, the nuts and bolts are all secure. Should the pump fail to operate, check that the valves and diaphragm are functioning properly, and replace as necessary.

9. SERVICE SUPPORT DETAILS

For installation or service advice please contact Whale® customer support:

Tel: +44 (0)28 9127 0531
Fax: +44 (0)28 9146 6421
Email: info@whalepumps.com
www.whalepumps.com

USA Tel: 1 802 367 1091
USA Fax: 1 802 367 1095
Email USA: usasales@whalepumps.com
www.whalepumps.com

10. EU DECLARATION OF CONFORMITY

Whale® manual bilge pumps are manufactured to International Standard EN ISO 15083.

11. PATENTS AND TRADEMARKS

WHALE®, is a registered trademark of Munster Simms Engineering Limited, Bangor, Northern Ireland trading as Whale.

12. WARRANTY

This Whale® product is covered by a 1 year warranty.
Please see the enclosed document for details of our statement of limited warranty.

©Copyright Whale 2012- All rights reserved.

WHALE®, is a registered trademark of Munster Simms Engineering Limited, Bangor, Northern Ireland trading as Whale. Whale's policy is one of continuous improvement and we reserve the right to change specifications without prior notice. Illustrations are for guidance purposes only.

