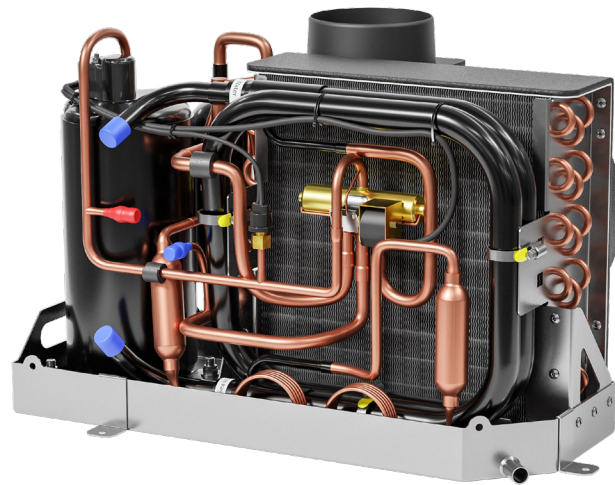


FCF Evo Series

Self-contained A/C system



Exceptional performance you can see and feel

Designed for comfort that feels effortless, this self-contained marine air conditioning system creates a calm, refined onboard environment with quiet confidence. Advanced R32 refrigerant with an optimized charge delivers environmentally responsible efficiency while achieving exceptional performance, with Energy Efficiency Ratio (EER) values up to 3.1 and Coefficient of Performance (COP) up to 4.4. Cooling and heating respond quickly and consistently - up to 27% more efficient in cooling/43% more efficient in heating compared to previous-generation systems - while reduced amperage draw supports smooth, uninterrupted operation.

Built to endure life at sea, the titanium condenser offers superior resistance to corrosion, performing reliably even in seawater temperatures up to 113°F (45°C). Thoughtful engineering extends to every detail: a rotated layout eases installation, enhanced airflow improves comfort on select capacities, and a refined stainless-steel condensate tray ensures clean, dependable drainage.

Features:

- Tailored flexibility: Nine capacities from 6–27k BTU/h (1.75-7.9 kW)
- Eco-efficient cooling: R32 refrigerant (GWP 675)
- Exceptional performance: Energy Efficiency Ratio (EER) up to 3.1 and Coefficient of Performance (COP) up to 4.4
- Built to endure: Titanium condenser and stainless steel condensate tray ensures corrosion resistance and dependable operation
- Modern, stylish interface: All-black Marine A/C control display and black-coated control box
- Installation-friendly design

A modern all-black control display and matching black-coated control box complete the understated aesthetic. With nine cooling capacities, dual-voltage options, and optional HDMS Soft Start, the system adapts seamlessly - delivering quiet, controlled comfort wherever the journey leads.



Technical Specifications

115V / R32	FCF Evo 6k	FCF Evo 10k	FCF Evo 13k	FCF Evo 16k	
Part number	2511264	2511266	2511267	2511268	
Cooling capacity nominal [BTU/h] [kW]	6,000 (1.8)	10,000 (2.9)	13,000 (3.8)	16,000 (4.7)	
Heating capacity nominal [BTU/h] [kW]	6,500 (1.9)	11,200 (3.3)	13,300 (13.9)	18,400 (5.4)	
Voltage/Phase [V/ph]	115V 1-Phase				
Frequency [Hz]	60				
Refrigerant	R32 with GWP of 675				
Current draw cooling [A]	4.2	7.3	9.9	13.2	
Energy efficiency	Up to 3.1 (4.2)				
Air flow (free blowing) [m³/h] [cfm]	275 (161.8)	350 (206)	430 (253)	650 (382.5)	
Weight [lb] [kg]	43 (19.5)	49 (22.2)	60 (27.2)	67 (30.3)	
Dimensions [in] [mm]	15.9 x 12.6 x 12.4 (405 x 320 x 315)	18.9 x 13.2 x 12.4 (480 x 335 x 315)	20.1 x 13.8 x 14.6 (510 x 350 x 370)	22 x 13.8 x 14.6 (550 x 350 x 370)	
230V / R32	FCF Evo 6k	FCF Evo 10k	FCF Evo 13k	FCF Evo 16k	FCF Evo 27k
Part number	2511258	2511260	2511261	2511262	2511263
Cooling capacity nominal [BTU/h] [kW]	6,000 (1.8)	10,000 (2.9)	13,000 (3.8)	16,000 (4.7)	27,000 (7.9)
Heating capacity nominal [BTU/h] [kW]	6,500 (1.9)	11,200 (3.3)	13,300 (13.9)	18,400 (5.4)	32,000 (9.4)
Voltage/Phase [V/ph]	230V 1-Phase				
Frequency [Hz]	50 - 60				
Refrigerant	R32 with GWP of 675				
Current draw cooling [A]	2.4	3.7	5.5	6.3	13.0
Energy efficiency [EER] [COP]	Up to 3.1 (4.4)				
Air flow (free blowing) [m³/h] [cfm]	275 (161.8)	500 (294.2)	580 (341.3)	625 (367.8)	2 x 550 (2 x 323.7)
Weight [lb] [kg]	45 (20.4)	53 (24)	62 (28.1)	70.5 (31.9)	106 (48)
Dimensions [in] [mm]	15.9 x 12.6 x 12.4 (405 x 320 x 315)	18.9 x 13.2 x 12.4 (480 x 335 x 315)	20.1 x 13.8 x 14.6 (510 x 350 x 370)	22 x 13.8 x 14.6 (550 x 350 x 370)	22.6 x 20.3 x 16.1 (575 x 515 x 410)

Marine A/C Control Display

+ 5m display cable:

- Matte finish for premium look and feel
- Operating status indicator
- Customizable cover plate like Vimar Eikon, Plana or BtcinoAxolute
- Versatile white LED multi-segment display - bright for daylight visibility, dimmable for cabin comfort
- Capacitive touch display



Control Box:

- Black with 2m fixed wiring harness



Contact