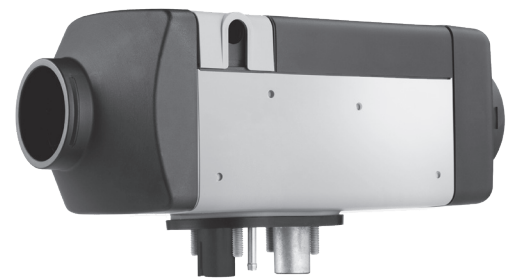


Marine Air Heaters

Air Top 2000 STC | Air Top Evo 40/55

Air Top 2000 STC 3,100 – 7,000 BTU



Air Top Evo 40 5,100 – 13,650 BTU
Air Top Evo 55 5,100 – 18,800 BTU



Immediate Heat to Cabins and Compartments:

Webasto Marine Air Heaters provide a better solution to boaters who require the ultimate in compartment and cabin heating. Operating up to 20 hours on a single gallon of fuel, Webasto Marine Air Heaters are quiet and a powerful source of heat on any vessel. Webasto Air Heaters are available separately or as part of an all-inclusive Air Heater Kit.

The New and improved Air Top 2000 STC boasts all of the features and benefits of its predecessor Air Top 2000 STC with improved features:

- NEW Split marine wiring harness with two branches (battery & cabin control)
- NEW exterior temperature sensor
- NEW low noise dosing pump 20% quieter

The Air Top Evo 40/55 models offer greater comfort, safety and heating capacity for boats and yachts. Air heating ensures quick and efficient heating of cabins. The Air Top Evo is an economical retrofit solution for any boater.

Key Features

- Quiet operation
- Fresh-air or recirculated air-intake
- Sealed control electronics and connectors
- Precise electronic temperature control system to maintain a constant cabin temperature through stepless modulation
- Continuous heat output provides the exact temperature desired
- High air flow output
- Low electrical power and fuel consumption
- Robust composite casing, resistant to high temperature and salt
- Quick heat up time
- Even distribution of warmth
- Compact design
- Compatible with BlueCool air conditioning systems
- Automatic altitude compensation

SmarTemp Control 3.0:

Part Number 5013873

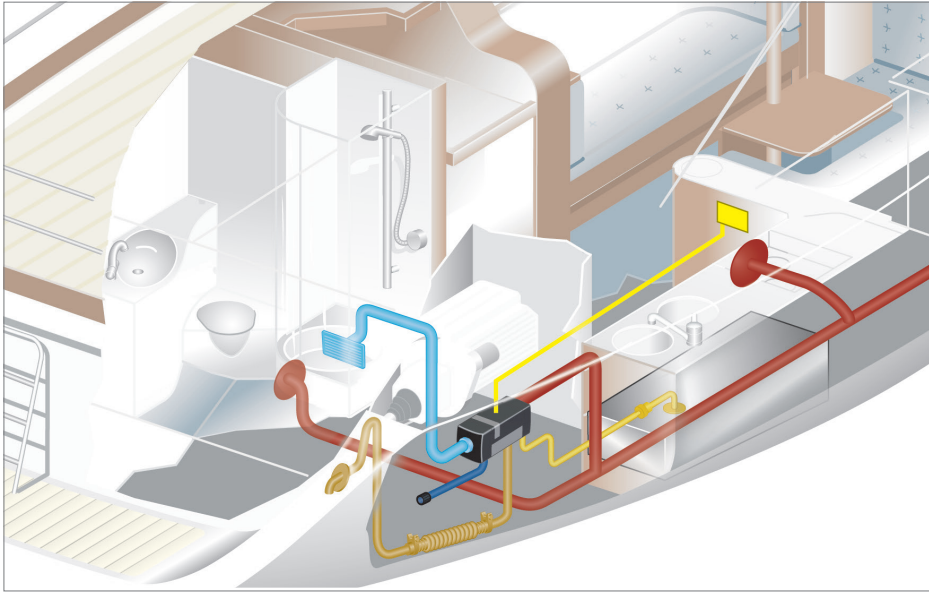
- Same unit controls air or coolant heater
- Programmable run times (Timers)
- Adjustable Low Voltage Disconnect (LVD)
- Preventive maintenance reminder
- Heater fault codes displayed



SmarTemp Control 3.0 Bluetooth:

Part Number 5013874

- Same features as SmarTemp 3.0
- Bluetooth connection to SmarTemp 3.0 App
 - View diagnostic information
 - Manage & control heater function
 - Link to techwebasto.com
 - Program multiple units



Kit Components:

- Heater
- Fuel Pump
- Screen
- Base Seal
- Heater Wire Harness
- Fuel Pump Harness
- Fuel Line
- Fuel Standpipe
- Exhaust Tubing
- Flexible Stainless Steel Exhaust Pipe
- Combustion Air Tubing
- Flexible Ducting
- Air Outlets
- Operation/Installation Manual
- 2 Year/2000 Hour Limited Warranty

Technical Specifications

	Air Top 2000 STC	Air Top Evo 40*	Air Top Evo 55**
Part Number & Description	Part Number: 5013921 Air Top 2000 STC Kit, 12 V, Diesel, Standard Kit with Ducting, SmarTemp Control element	Part Number: 5013922 Air Top Evo 40 Kit, 12 V, Diesel, Marine Kit, SmarTemp, w/ Ducting	Part Number: 5013925 Air Top Evo 55 Kit, 12 V, Diesel, Marine Kit, SmarTemp, w/ Ducting
	Part Number: 9034524 Air Top 2000 STC, 12 V, Diesel, Base Heater	Part Number: 5013923 Air Top Evo 40 Kit, 12 V, Diesel, Marine Kit, SmarTemp, no Ducting	Part Number: 5013926 Air Top Evo 55 Kit, 12 V, Diesel, Marine Kit, SmarTemp, no Ducting
		Part Number: 9039727 Air Top Evo 40, 12 V, Diesel, Base Heater Only	Part Number: 9039732 Air Top Evo 55, 12 V, Diesel, Base Heater Only
		Part Number: 5013924 Air Top Evo 40 Kit, 24 V, Diesel, Marine Kit, SmarTemp, w/ Ducting (Available by special order)	Part Number: 5013927 Air Top Evo 55 Kit, 24 V, Diesel, Marine Kit, SmarTemp, w/ Ducting (Available by special order)
		Part Number: 9027981 Air Top Evo 40, 24 V, Diesel, Base Heater, Gasket & Fuel Pump	Part Number: 5013928 Air Top Evo 55 Kit, 24 V, Diesel, Marine Kit, SmarTemp, no Ducting
			Part Number: 9027986 Air Top Evo 55, 24 V, Diesel, Base Heater Only, Gasket & Fuel Pump
ECE R122 (Heater) ECE R10 (EMC)	E1 122R-00 0216	E1 122R-00 0385 E1 10R-05 5529	E1 122R-00 0386 E1 10R-05 5529
Heat output (kW)	0.9 – 2.0	1.5 – 3.5 (4.0*)	1.5 – 5.0 (5.5*)
Heat output (BTU/h)	3,000 – 7,000	5,100 – 12,000 (13,600*)	5,100 – 17,000 (18,800*)
Fuel, Fuel consumption (l/h)	Diesel, 0.12 – 0.24	Diesel, 0.18 – 0.43 (0.49)	Diesel, 0.18 – 0.61 (0.67)
Fuel, Fuel consumption (gal/h)	Diesel, 0.03 – 0.06	Diesel, 0.04 – 0.11 (0.12)	Diesel, 0.04 – 0.15 (0.17)
Rated voltage (V)	12	12, 24	12, 24
Rated power consumption (W)	14 – 29	15 – 40 (55)	15 – 95 (130)
Rated current (for 12 V) (A)	1.2 – 2.4	1.3 – 3.3 (4.6)	1.3 – 7.9 (10.8)
Rated current (for 24 V) (A)	–	0.6 – 1.7 (2.3)	0.6 – 4.0 (5.4)
Air Flow against 0.5 mbar (m ³ /h)	93	max. 132 (140)	max. 200 (220)
Air Flow against 0.5 mbar (cfm)	55	77.7 (82)	117.7 (129.4)
Dimensions L x W x H (mm)	311 x 120 x 121	423 x 148 x 162	423 x 148 x 162
Dimensions L x W x H (inch)	12.2 x 4.7 x 4.7	16.6 x 5.8 x 6.3	16.6 x 5.8 x 6.3
Weight (kg)	2.6	5.9	5.9
Weight (lbs)	5.73	13	13
Diameter air outlet (mm)	60	90	90
Diameter air outlet (inch)	2.36	3.54	3.54
Diameter exhaust w/ adapter (mm)	24	24	24
Diameter exhaust w/ adapter (inch)	0.94	0.94	0.94

* Boost power level for a maximum duration of 6 hrs. ** Boost power level for a maximum duration of 30 min.

Webasto Thermo & Comfort
North America, Inc.

15083 North Road
Fenton, Michigan 48430
USA
Toll Free: 800-860-7866
Phone: 810-593-6000

webasto-comfort.com

