



The Simrad RS90S VHF radio is a comprehensive solution for marine VHF radio applications.

The radio comprises:

RS90S VHF transceiver.

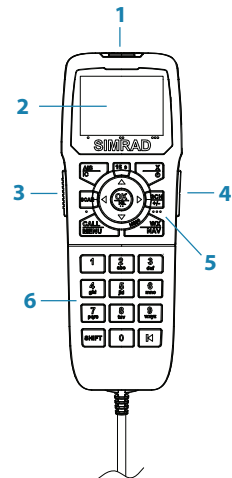
One wired handset as standard, and optionally up to 3 more wired handsets. (Maximum of 4 wired handsets in total.)

Up to 2 optional wireless handsets.

Up to 4 optional external speakers.

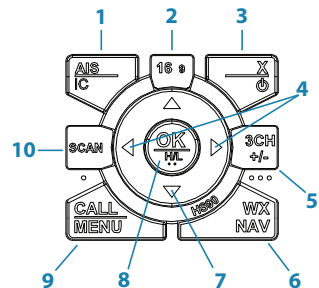
## Handset parts

1. Red distress cover with DISTRESS button beneath
2. Screen
3. PTT button
4. Volume control
5. Function keys
6. Keypad (wired handsets only).



## Handset control buttons

1. **Short press** for AIS menu. **Long press** for Intercom / Hailer mode.
2. Press to select the priority channel.
3. **Short press** for Exit key. **Long press** for power on/off.
4. Squelch keys. Also used for moving cursor left/right.
5. Three favourite channel key.
6. **Short press** for weather station (US models). **Long press** for Navigation mode.
7. Change channel, or scroll menu options.
8. **Short press** for [OK] key. **Long press** to toggle high/low power.
9. **Short press** for DSC menu. **Long press** for menu.
10. **Short press** to start dual-watch or tri-watch mode. **Long press** to start scanning channels.



## Operating the radio

All the operating functions of the RS90S are carried out using the handsets. Each handset contains a microphone, a small internal loudspeaker and various buttons for controlling the radio. Two types of handset are available:

- Up to four wired handsets can be connected. There must be at least one wired handset connected to the station one terminal in the installation.
  - Up to two wireless handsets can be installed. The wireless handsets communicate with the transceiver by 2.4 GHz radio communication. The wireless handsets are powered by internal rechargeable batteries, and are charged by inductive charging when on the cradle.
- **Note:** When there are multiple handsets, they are synchronized so that there is no conflict of operation and each display the same information on their screens.

### Switching the system ON

1. Press and hold the [X] key on a wired handset until the startup screen showing version numbers appears.
2. When prompted, press [X] to exit the startup screen and display the main operating screen.

This switches on the transceiver and the wired handset.

→ **Note:** A wireless handset can only switch itself on and off.

### Switching the system OFF

- Press and hold the [X] key on a wired handset until the display shows "Release key to power off."

#### Just one handset

1. In standby mode, press [X] on the wired handset until the display shows "Release key to power off."
2. Release the [X] key.

#### More than one wired handset

HS1 (handset 1) has a power-off menu. All other handsets simply power themselves off.

Handset-1 power-off menu:

- **SYSTEM**

Turns off all handsets and the transceiver.

- **HS1**

Turns off the handset itself. Displays "SYSTEM IS WORKING" with no backlight.

→ **Note:** You can ignore the power-off menu and keep holding down [X] until the display shows "Release key to power off."

## Switching a wireless handset ON:

- Press and hold [X] until the display illuminates.

The display shows “Searching” then “Connecting,” and then the current operating screen.

### → Notes:

- This only switches on the individual wireless handset, not the transceiver.
- If the transceiver is off, the wireless handset continues to display “Searching”.
- At install time, wireless handsets must be subscribed. See “Subscribing a wireless handset” in the User’s Manual.

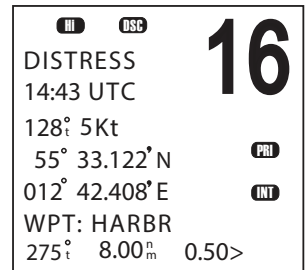
## Switching a wireless handset OFF

→ **Note:** This procedure only switches off the wireless handset. It does not switch off any other handsets or the transceiver.

1. Press and hold [X] until the following message appears “Release key to power off.”
2. Release the [X] key.

## Screen Icons

The following illustration shows a typical operating screen in standby mode. The radio is in standby mode when it is waiting to send or receive calls.



During normal operation, the following icons may be displayed on the screen depending on setup:

Symbol	Meaning
<b>A</b> or <b>B</b>	Channel suffix
<b>AIS</b>	AIS is enabled
<b>!</b>	Flashing if a weather alert has been received (US models only)
<b>ATIS</b>	ATIS is enabled
<b>+ -</b>	Low battery warning. Activates at 10.5 V
<b>✉</b>	Incoming DSC call. Flashing if there are unread call log messages
<b>CAN</b>	Canadian channel bank is selected
<b>CH1, CH2, CH3</b>	Favourite channel 1, 2 or 3 is selected
<b>D</b>	The current channel is a duplex channel
<b>DSC</b>	DSC is enabled

<b>DW</b>	Dual watch mode
<b>Hi</b>	High transmission power (25 W)
<b>INT</b>	International channel bank selected
<b>Lo</b>	Low transmission power (1 W)
<b>LOCAL</b>	'Local' sensitivity selected. Otherwise blank for distance sensitivity
<b>PRI</b>	The priority channel is selected
<b>RX</b>	The radio is receiving
<b>S</b>	The Shift key has been pressed
<b>SAME</b>	The SAME alert setting is 'ON'
<b>SCAN</b>	Channel scanning in operation
<b>SKIP</b>	This channel is being skipped in the scan
<b>TRI</b>	Tri watch mode
<b>TX</b>	The radio is transmitting
<b>USA</b>	USA channel bank is selected
<b>X</b>	Auto Switch is set to OFF
●	Voice recording is ON

## Warranty

In case of any queries, refer to the brand website of your unit or system:  
[www.simrad-yachting.com](http://www.simrad-yachting.com)

## RF emissions statements

This RS90S complies with CE under RED Directive 2014/53/EU. The relevant Declaration of conformity is available in the product's section at the following website:  
[www.simrad-yachting.com](http://www.simrad-yachting.com)

Additional compliance statements can be located in the Preface of the RS90S User Manual.

## RS90S User Manual

Please download a copy of the RS90S User Manual (988-10492-00x) from the product's section at the following website: [www.simrad-yachting.com](http://www.simrad-yachting.com).

