



# CONCENTRATE MARINE DESCALER

Removes scale, calcium deposits, corrosion, salt and carbon buildup in your boat systems: engine's cooling systems, reverse cycle A/C and refrigeration systems, sea strainers and other raw-water cooled equipment.



## DIRECTIONS

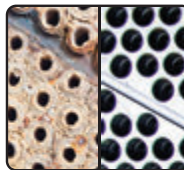
1. Isolate and drain system to be descaled, making sure no raw water can be introduced during the process. Disable compressor or chiller to prevent operation during descaling. Flush system with fresh water to remove any remaining sea water prior to beginning.
2. Properly dilute Marine Descaler. Fill system with the required amount\* of diluted Marine Descaler. Set up a recirculating system with a suitable pump in which both inputs and outputs feed/drain solution from a container or bucket. Recirculate for 4-8 hours or until scale has dissolved. If pump unavailable, allow product to soak in the system for the same time. DO NOT seal the system off, as gassing will occur during the process and excess pressure may cause damage.
3. Drain solution from system and dispose in accordance with local, state and federal laws.
4. Flush system with fresh water to remove any remaining Marine Descaler, and then reassemble properly. It is recommended to replace all sacrificial anodes at this time.

\*Amount varies by system.

PART	SIZE	CASE PACK
90801	1 GAL	4

## FEATURES

- Concentrated formula
- Removes scale and deposits from all marine engines
- Will not damage engine seals, gaskets or rubber impellers



SCALE



CALCIUM



DEPOSITS

## RECOMMENDED DILUTION

Mix 1 part Concentrate Marine Descaler for every 4 parts fresh water for all applications, including recirculating and soaking.