

Furler System Information

The furler you have purchased is designed for top-down furling of sails with a “soft” luff and full mid-section, such as coded asymmetrics, reachers and gennakers.

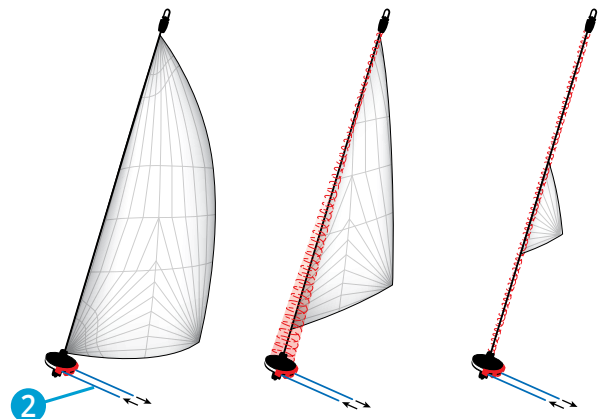
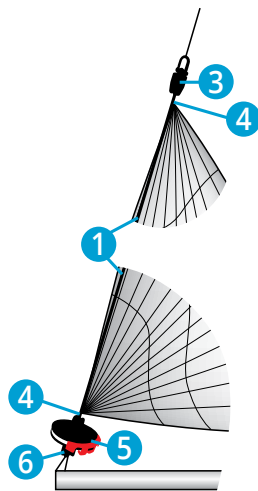
These sails are generally for sailing at true wind angles of greater than 90°. The top-down furler is designed to have the tack of the sail attached to the “floating” swivel collar at the base of the fork on the furler, and the head of the sail attached to the top swivel. Furling begins at the top of the sail and continues progressively from the head down to the tack.

The sail must be either completely unfurled or furled – the furler cannot be used with a partially furled sail. You will require a synthetic luff cable (torsion line) with a thimble at each end, connected between the fork of the furler at the bottom and the swivel at the top. We recommend you discuss options with your sail maker for torsion line type, diameter and length, to suit your requirements. Effective top-down furling relies on the size and quality of the torsion rope - use the largest size that will fit in the thimble.

Ronstan provides a range of accessories to suit this furler which can be found at the end of this manual.

FURLER SETUP – STRAIGHT LUFF SAILS:

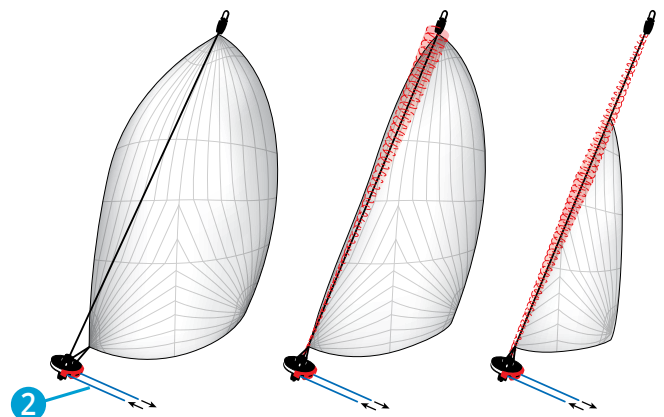
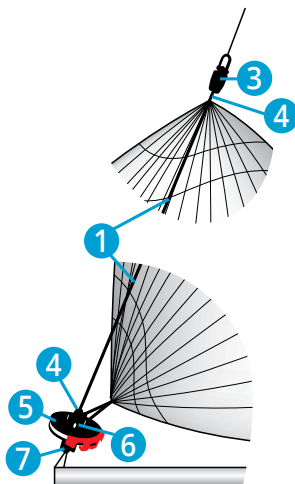
- 1 Torsion rope
- 2 Continuous Furling Line
- 3 Top Swivel
- 4 Thimble
- 5 Furler
- 6 Shackle, Snap Shackle or 2:1 Fairlead



As furling drum rotates, sail furls around the luff cable along its entire length.

FURLER SETUP – SOFT LUFF SAILS:

- 1 Torsion rope
- 2 Continuous Furling Line
- 3 Top Swivel
- 4 Thimble
- 5 Furler
- 6 Top Down Swivel Collar (Tack Attachment)
- 7 Shackle, Snap Shackle or 2:1 Fairlead



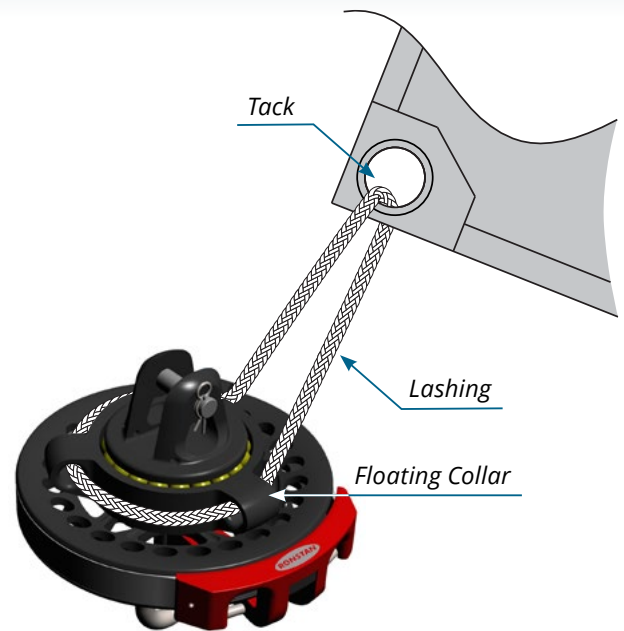
As furling drum rotates, the tack remains stationary on the “floating” collar. The torsion rope turns the top swivel, furling the sail from the top down.

TACK ATTACHMENT

The tack of the sail is attached to the floating collar by means of lashing through the three holes as shown. This ensures an even load distribution on the collar and therefore effective free swivelling.

The offset nature of the three lugs and holes helps to keep the tack clear of the rotating torsion rope during furling.

TIP: If the tack of the sail is very stiff, it may be prone to catching on the torsion line whilst furling. To avoid this, attach an additional loose line to the tack of the sail. Pulling on this line while furling will keep the tack clear of the torsion rope.

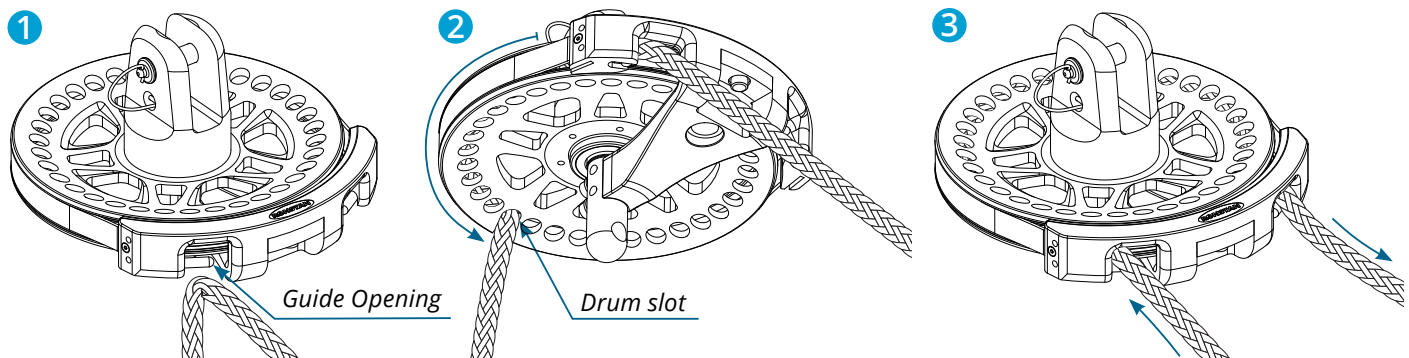
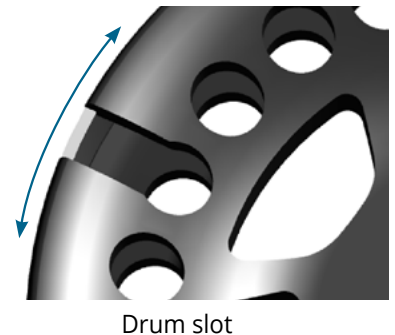


CONTINUOUS FURLING LINE INSTALLATION & REMOVAL

The furling line can be easily loaded and removed from the furler, for installations where the furling line is permanently routed back to the cockpit through blocks or fairleads.

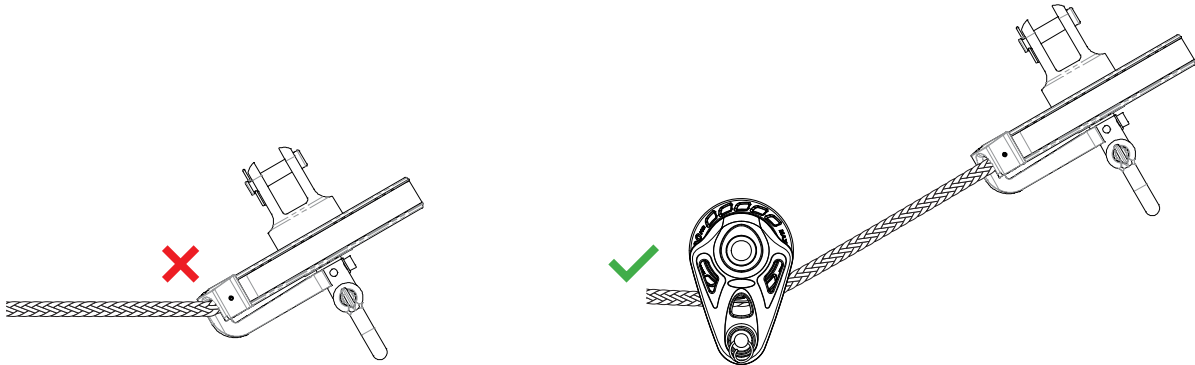
The Series 120 furler is optimised for use with 8mm (5/16") rope. Rotate the drum to align the slot in the bottom plate of the drum with the guide opening.

- 1 Push the rope through the guide opening and deep in to the slot until the rope is in the hole.
- 2 Rotate the drum all the way around until the slot lines up with the guide opening on the other side of the guide.
- 3 Pull the rope out through the guide opening.



FURLING LINE ALIGNMENT

It is important that the furling line is correctly aligned with the guide as shown below. Blocks or fairleads should be used to guide the line where required.



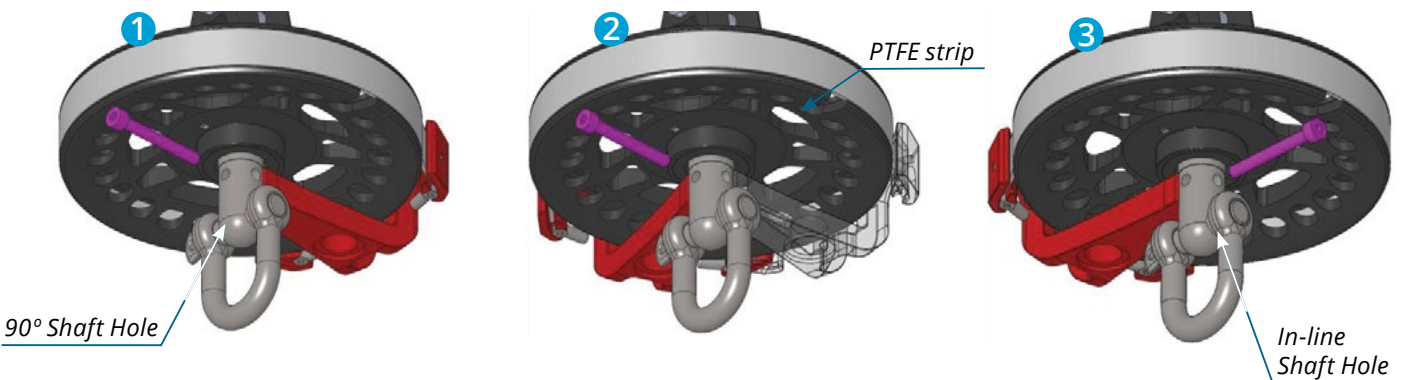
The furling line can be cleated to keep the sail from unfurling.

GUIDE ARM ALIGNMENT

The guide arm can be positioned in-line or at 90 degrees to correctly align the furler mount with the deck or bowsprit attachment.

To change the orientation of the guide arm:

- 1 Remove the screw located in the guide arm underneath the drum.
- 2 Rotate the guide arm and PTFE strip 90° until the hole in the guide arm lines up with the alternate hole in the shaft.
- 3 Re-connect the guide arm to the shaft using the same screw.



ACCESSORIES

RS212010 – Top Swivel

The top half of the continuous line furling system, the top swivel is matched to furler load rating and the fork is designed for use with our dedicated torsion line thimble. It features a maintenance free, factory sealed bearing, retained clevis pin and snag-free low profile shackle pin head.

RS212020 – Snap-Shackle

Simply replace the shackle on the furler or top swivel with the snap-shackle adaptor for quick attachment of the furler to your bow fitting or the top swivel to your halyard.

RS212030 – 2:1 Fairlead

Use in place of the shackle on the furler to provide a 2:1 purchase on the furler attachment. The tack line is dead ended at the deck or end of the bowsprit, runs up around the 2:1 fairlead, back down to a block, and back along the deck to a rope clutch.

This configuration is a popular way of adjusting tension in the torsion rope, and hence the luff of the sail.



Typical 2:1 setup

RS212040 – Thimble

Used to terminate the torsion rope at both ends by wrapping the torsion rope around the thimble and then either stitching it to itself, or splicing it. The thimble also has an additional hole suited to lashing the tack of the sail to it. Lashing the sail to the thimble and not to the furler allows the torsion line and sail to be easily removed from the furler and top swivel as required.

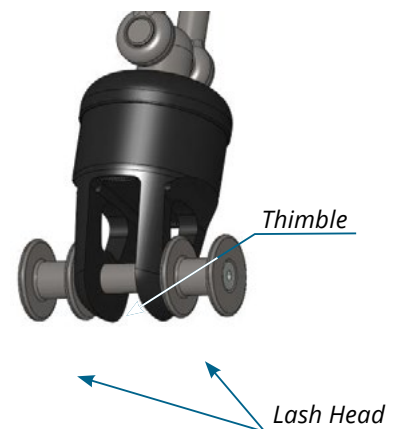
RS212050 – HR Shackle

Replacement shackles can be ordered to suit both the top swivel and the furler.

RS212080 – Top Swivel Lashing Pin

Use in place of the clevis pin on the top swivel to provide a more positive drive to the head of the sail. This helps to ensure a tight furl at the head.

The head of the sail is lashed to the cotton reels on the ends of the pin while the torsion rope and thimble are attached to the centre section of the pin.



RS212070 – Rotation Stop

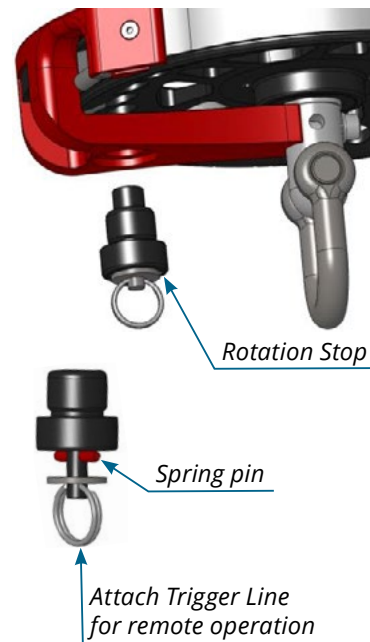
This is designed to be engaged once the sail is fully furled to avoid unintentional unfurling if the furling line is un-cleated. Useful if the furled sail is to be left in position for a period of time or lowered to be put in its bag.

The stop assembly is screwed in to the threaded hole in the guide arm. It incorporates a spring-loaded plunger pin which, once engaged, sits in one of the through-holes in the drum to prevent rotation.

The rotation stop can either be operated manually at the furler unit, or remotely using a trigger line attached to the spring pin and led back to a cleat. This will allow remote locking or unlocking of the furler.

The furler will experience some movement due to pitching of the boat, so attach a short length of shock cord to the trigger line to maintain tension and keep the plunger pin disengaged.

The rotation stop is designed to fail if a high load is applied to the furling line, in order to avoid damage to the furler. A failed stop can easily be replaced with a new one.



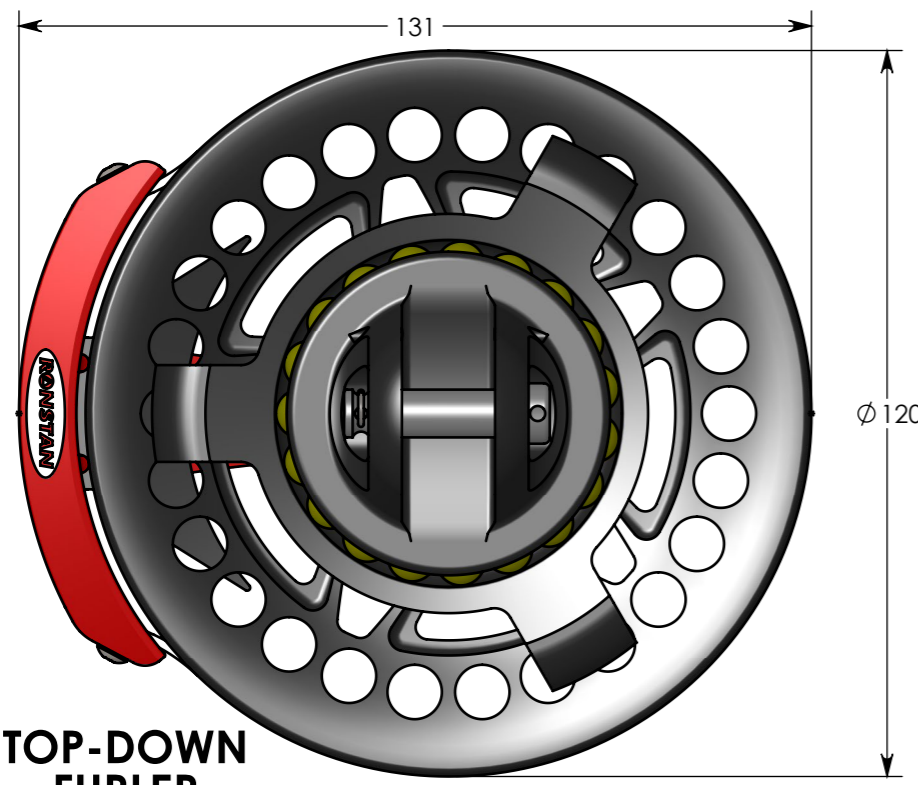
L4-400-2 – Soft Loop Shackle 4mm

Used to attach the tack of the sail to the floating top-down collar on the furler. The loop is passed through all three lashing holes before passing through the tack of the sail and connecting to itself. (Refer to previous diagram under “tack attachment”.)

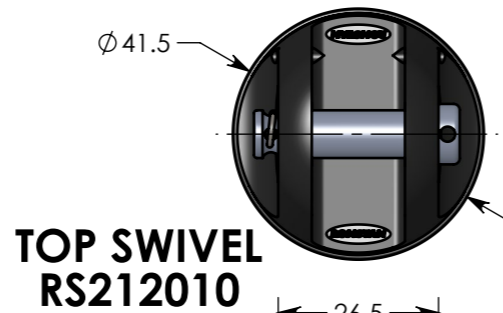
The soft loop shackle allows easy attachment and release of the tack from the floating collar of the furler – an advantage if the furler is to be left on deck.

MAINTENANCE

- Rinse regularly with fresh water to remove salt.
- Apply Ronstan RF3000 Sailfast™ (or a similar silicon based lubricant) over the body and components to enhance performance and prolong service life. (Do not use petro-chemical lubricants).
- Periodically remove fasteners and re-apply Tef-Gel® (TG-10) to prevent corrosion.
- Factory sealed bearings are maintenance free. Bearing and seal replacement can be arranged through your local Ronstan re-seller.
- Furlers have a three year warranty – refer to www.ronstan.com for terms and conditions.



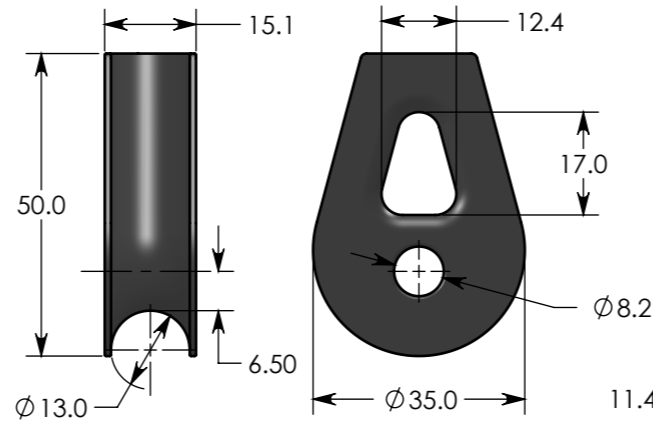
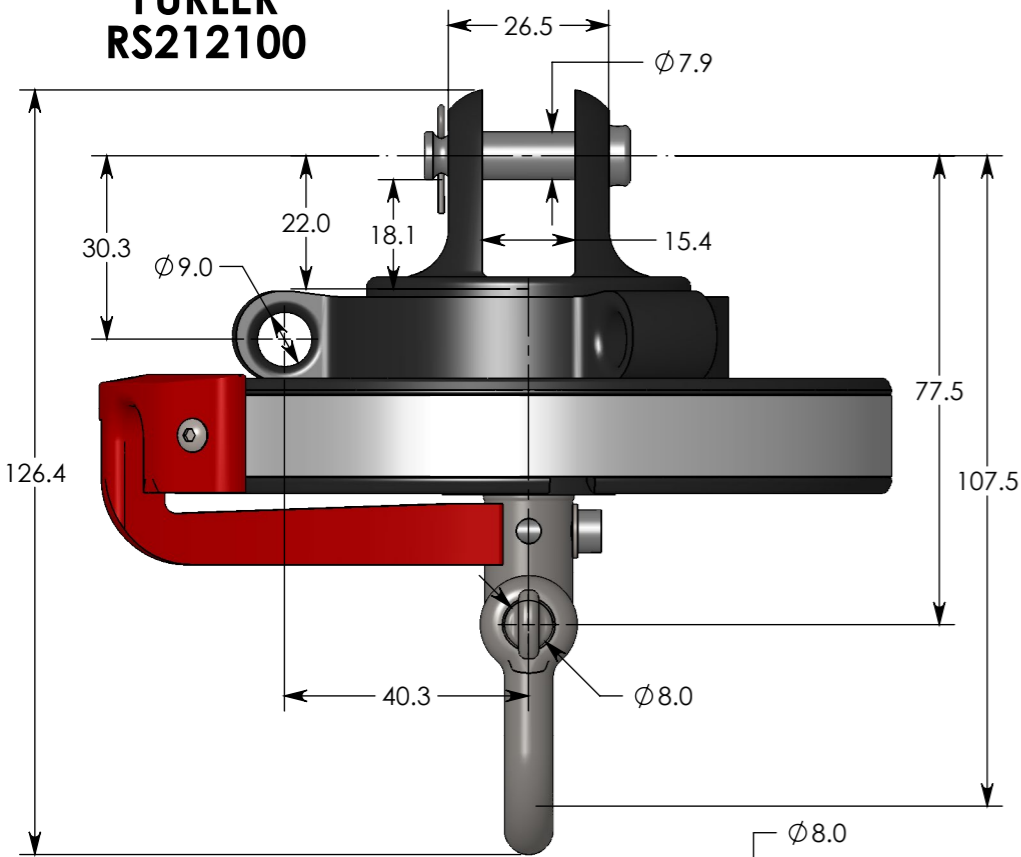
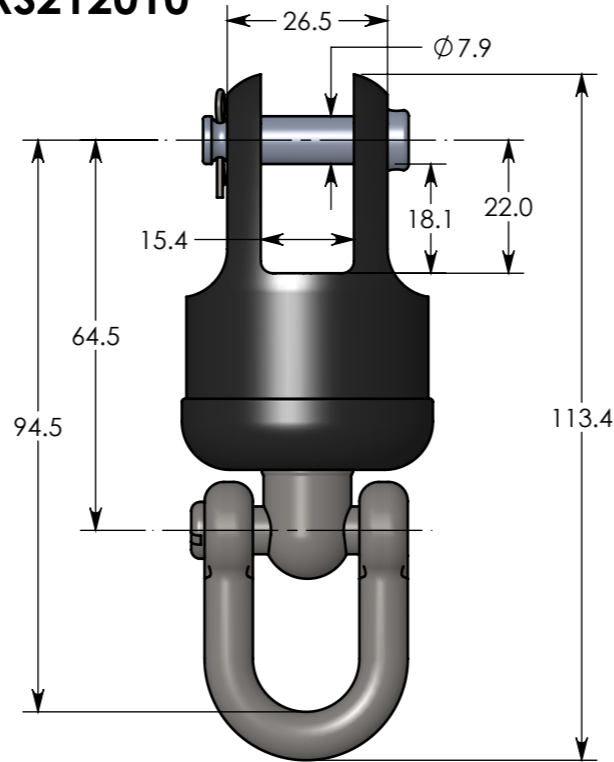
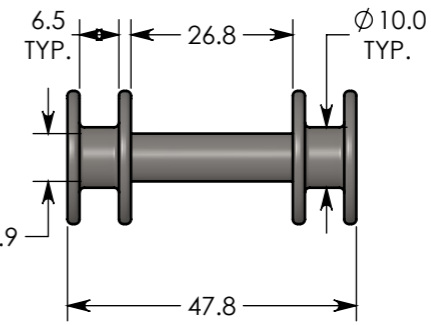
**TOP-DOWN FURLER
RS212100**



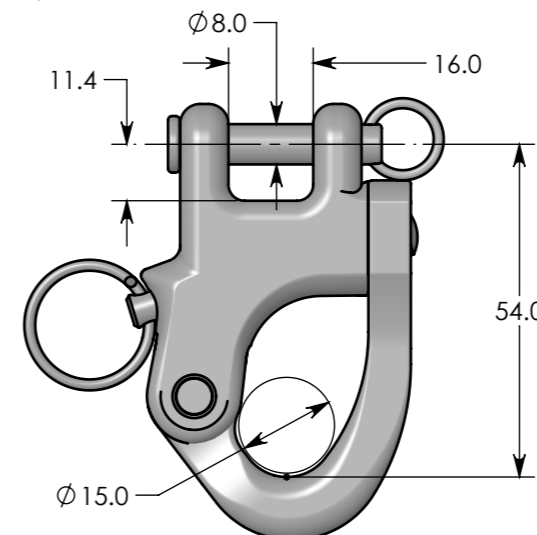
**TOP SWIVEL
RS212010**



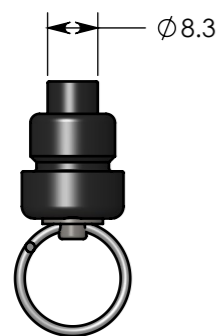
**TOP SWIVEL
LASHING PIN
RS212080**



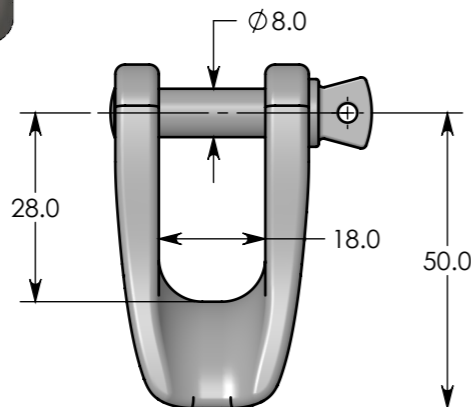
**THIMBLE
RS212040**



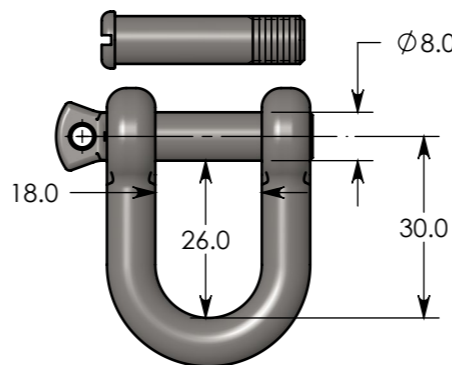
**SNAP-SHACKLE
ADAPTOR
RS212020**



**ROTATION STOP
RS212070**



**2:1 FAIRLEAD
RS212030**



**HR SHACKLE
RS212050**

**SPECIFICATIONS: RS212100 + RS212010
S120 TOP-DOWN FURLER & TOP SWIVEL**

RS212100 - TOP-DOWN FURLER & SHACKLE

MWL = 1800kg (3970lb)
BL = 3600kg (7940lb)
WEIGHT * = 498g (17.6oz)
FURLER LINE Ø = 8mm (5/16")
SHACKLE = 8mm HR

RS212010 - TOP SWIVEL & SHACKLE WITH FLUSH PIN

MWL = 1800kg (3970lb)
BL = 3600kg (7940lb)
WEIGHT * = 162g (5.7oz)
SHACKLE = 8mm HR

*Weight doesn't include Shackle

ACCESSORIES:

RS212020 - SNAP SHACKLE ADAPTOR

MWL = 1280kg (2820lb)
BL = 3850kg (8490lb)
WEIGHT = 130g (4.6oz)

RS212030 - 2:1 FAIRLEAD

MWL = 1760kg (3880lb)
BL = 4100kg (9040lb)
WEIGHT = 96g (3.4oz)

RS212040 - THIMBLE

MATERIAL = AL6061, ANODISED
WEIGHT = 23g (0.8oz)

RS212050 - HR SHACKLE, 8mm (PLUS FLUSH PIN)

BL = 4400kg (9700lb)
WEIGHT = 55g (1.9oz)

RS212070 - FURLER ROTATION STOP

WEIGHT = 10g (0.3oz)

RS212080 - TOP SWIVEL LASHING PIN, 8mm

MWL = 1800kg (3970lb)
BL = 3600kg (7940lb)
WEIGHT = 48g (1.7oz)

THE DOCUMENT & THE DESIGN ON IT IS THE EXCLUSIVE PROPERTY OF RONSTAN INTERNATIONAL PTY. LTD. & IS THE SUBJECT OF COPYRIGHT.



DATE: 05/12/16
ALL DIMS IN MM
DO NOT SCALE

www.ronstan.com