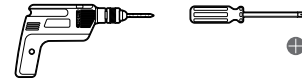


## SKYSCREEN ROLLER SURFACE INSTALLATION INSTRUCTIONS

### You will need

Power drill, drill bit  $\varnothing 2.5\text{mm}$  (1/8"), cross headed screwdriver.

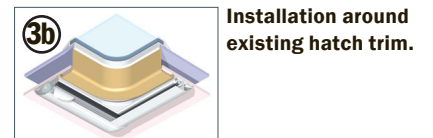
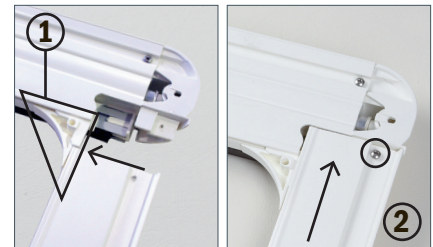


### Assembly instructions

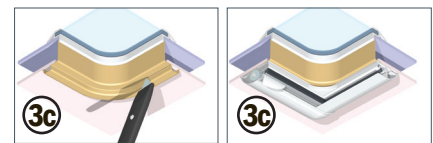
- ① Slide the corner radius into the grooves located at each end of the two roller cassette units.
- ② Align the corner radius with grooves found in the side rails, slot together and screw into place using the four small screws provided.

### Mounting instructions

- ③ Ensure that the thickness of the boat structure at the proposed mounting position is deep enough to prevent the fixing screws from breaking through. If necessary, use shorter fixing screws than those supplied. Use masking tape on the drill bit as a guide to avoid drilling too deep. Ensure that the fixing screws supplied are suitable for the headliner material. Offer the assembled Skyscreen up to the aperture to check the fit. If the hatch has a trim you must either install around the trim (b), or carefully cut the trim away leaving behind a flat surface (c). Open the four screw fixing covers located on each corner, mark and then drill four fixing holes into the boat structure.
- ④ Pre-load screws into each corner and wind in the first two or three threads.
- ④a An alternative fixing position is available through the corner radius. Drill out the indentations in the four corner radius to open up the fixing holes.
- ⑤ Fix the blind in position by screwing through the four corners with the long screws provided. Take care not to over-tighten the screws. It is recommended that another person holds the Skyscreen in position whilst it is being fixed into place. Snap the corner covers closed on completion.
- ⑥ Once installed, test the Skyscreen for distortion caused during the installation process (distortion would cause the unit to jam).



Installation around existing hatch trim.



Installation over existing ABS hatch trim.

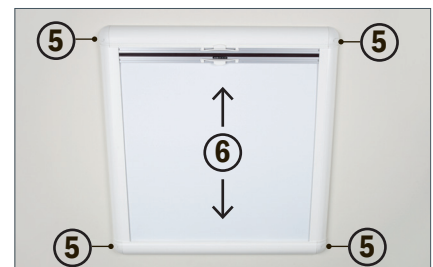


### Care and maintenance

- It is recommended to lubricate the side rails with a silicon spray to ensure that the blind continues to run smoothly through the runners. Never use grease or oil.
- The spring systems are stainless steel and do not require servicing. The spring tension may be altered.
- The fabric of the blind is polyester and can be wiped clean. If the blind gets wet, pull the fabric out and leave to dry naturally.
- Never use acetone or similar solvents to clean the extrusion. (Handle with care at all times as plastic can scratch).
- All Oceanair component parts may be replaced if damaged. To identify the specifications of your Skyscreen please refer to the label on the back of the frame.

### Optional hatchliner

- For further information on available trim solutions, please contact your local Oceanair distributor, [www.oceanair.co.uk/distributors](http://www.oceanair.co.uk/distributors)



For further information or installation assistance, please contact your local Oceanair Distributor:  
[www.oceanair.co.uk/distributors](http://www.oceanair.co.uk/distributors).

Oceanair Marine (UK): +44 (0)1243 606 909      techsupport@oceanair.co.uk  
Oceanair Marine (US): +1 802 362 5258      info@oceanairmarine.com