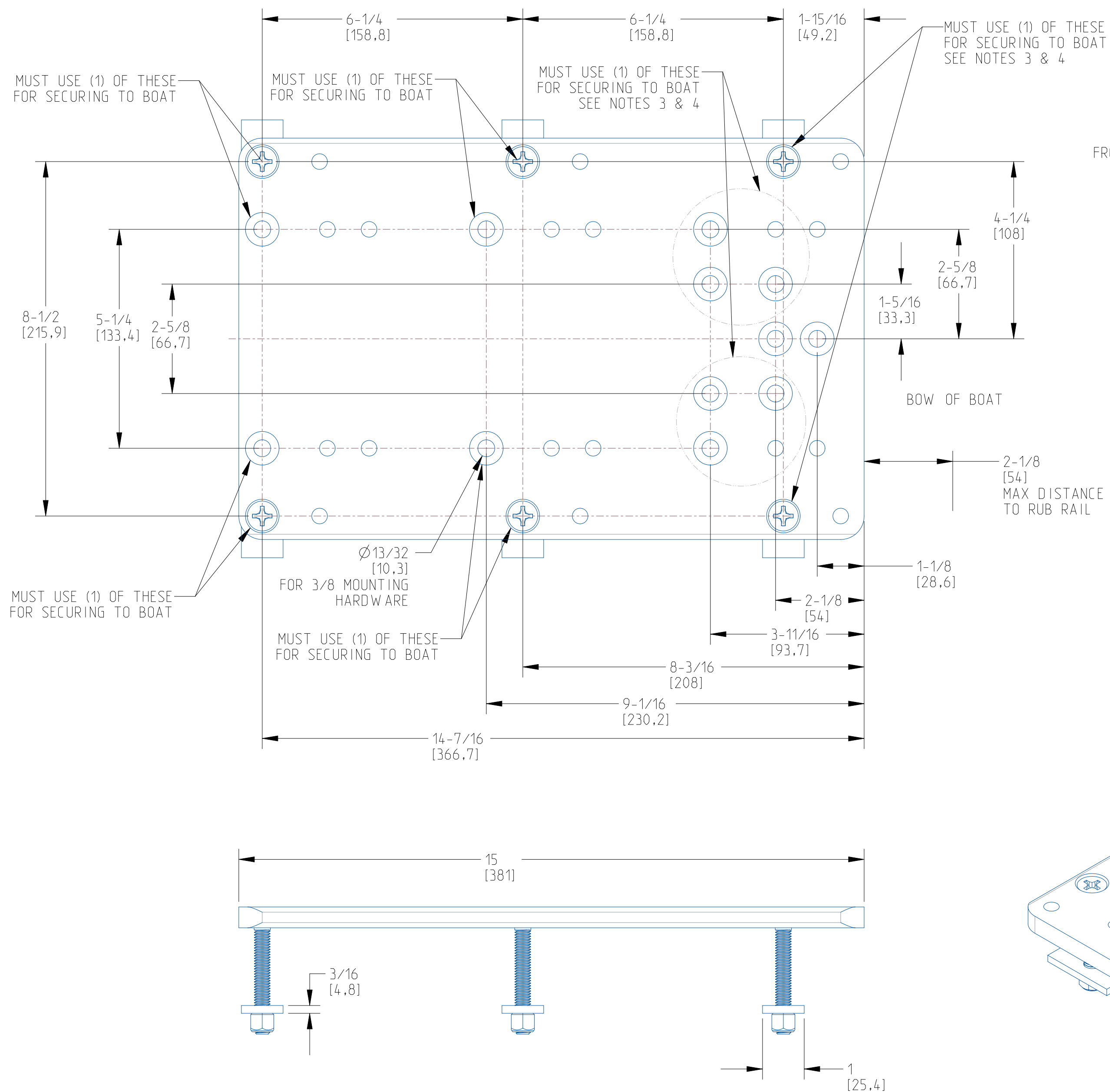
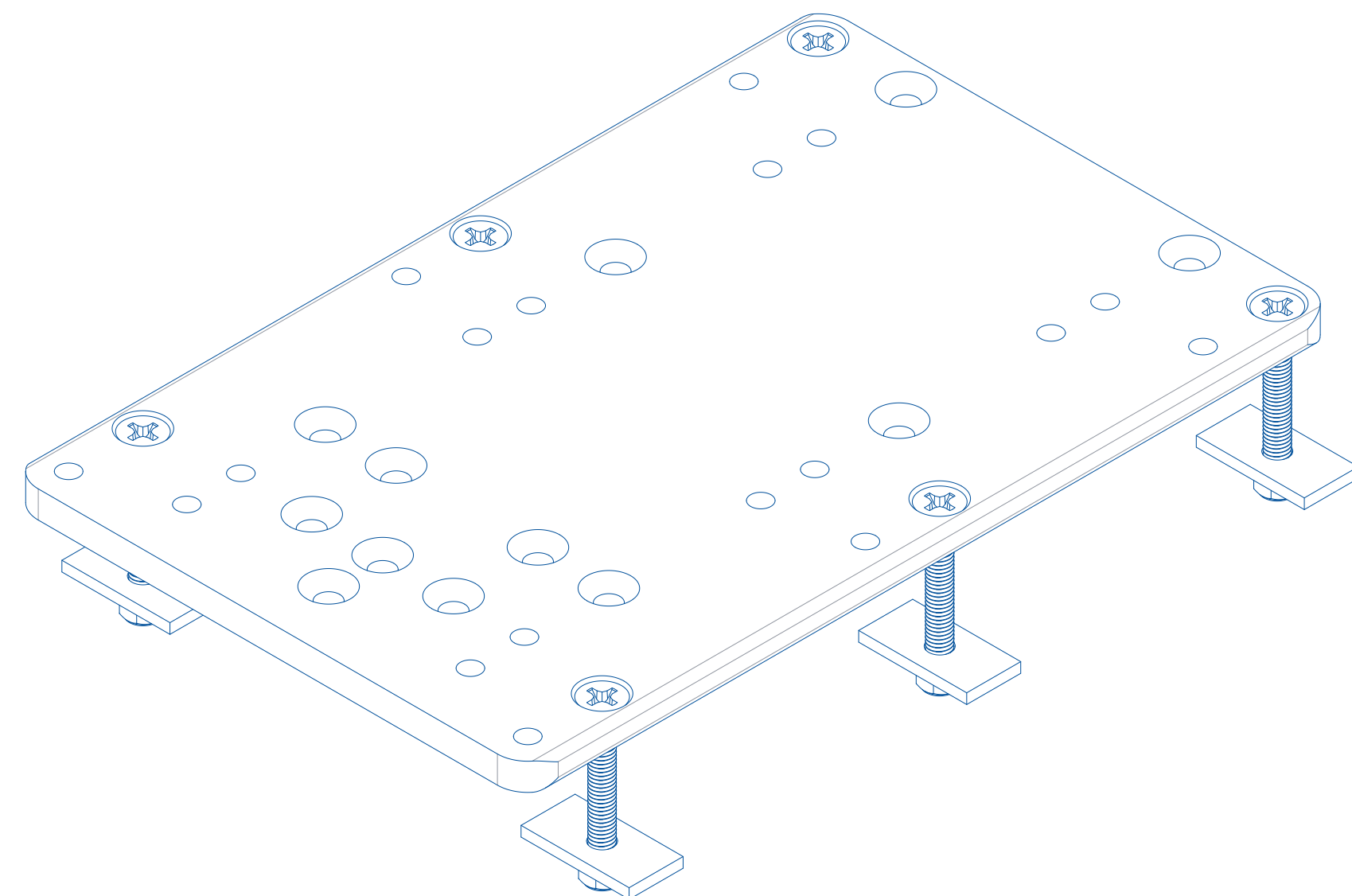
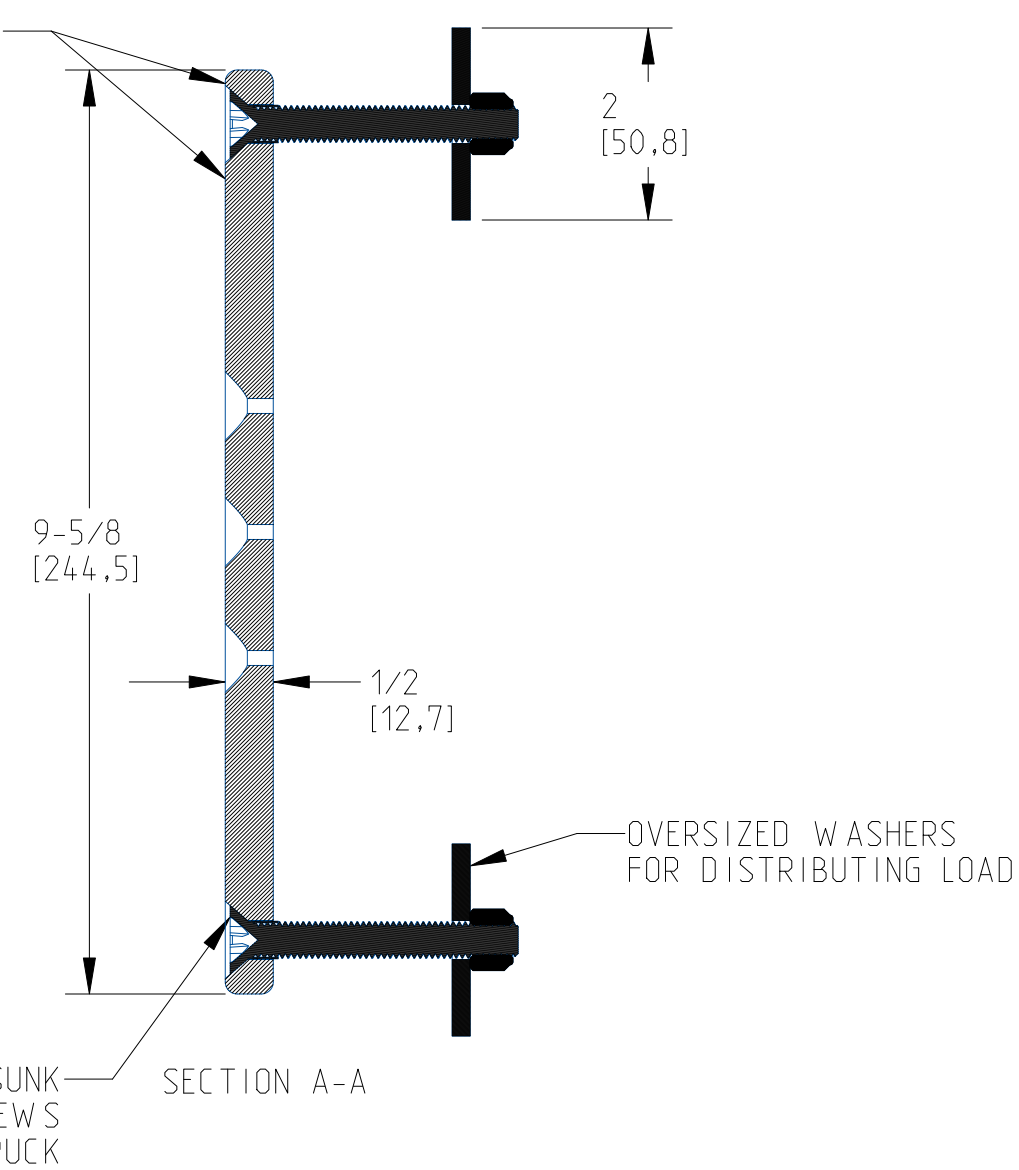


REV. ECN NO.		REVISIONS DESCRIPTION	BY	DATE
A	44080	RELEASE FOR PRODUCTION	JRL	16JUN2023



FASTENER HEAD TO BE FLUSH OR RECESSED FROM MOUNTING SURFACE WHEN INSTALLED



## NOTES:

1. RECOMMENDED DRILL SIZE 13/32
2. MOUNTING FASTENERS TO BE MINNKOTA SUPPLIED 3/8-16 WITH COUNTERSUNK HEADS
3. REFER TO INSTALLATION INSTRUCTIONS 2377183 FOR REQUIRED/RECOMMENDED HOLES TO MOUNT REINFORCEMENT PLATE TO BOAT DECK
4. A FASTENER FROM EACH GROUP MUST BE USED AND THEY MUST BE ON OPPOSITE SIDES OF CENTERLINE.

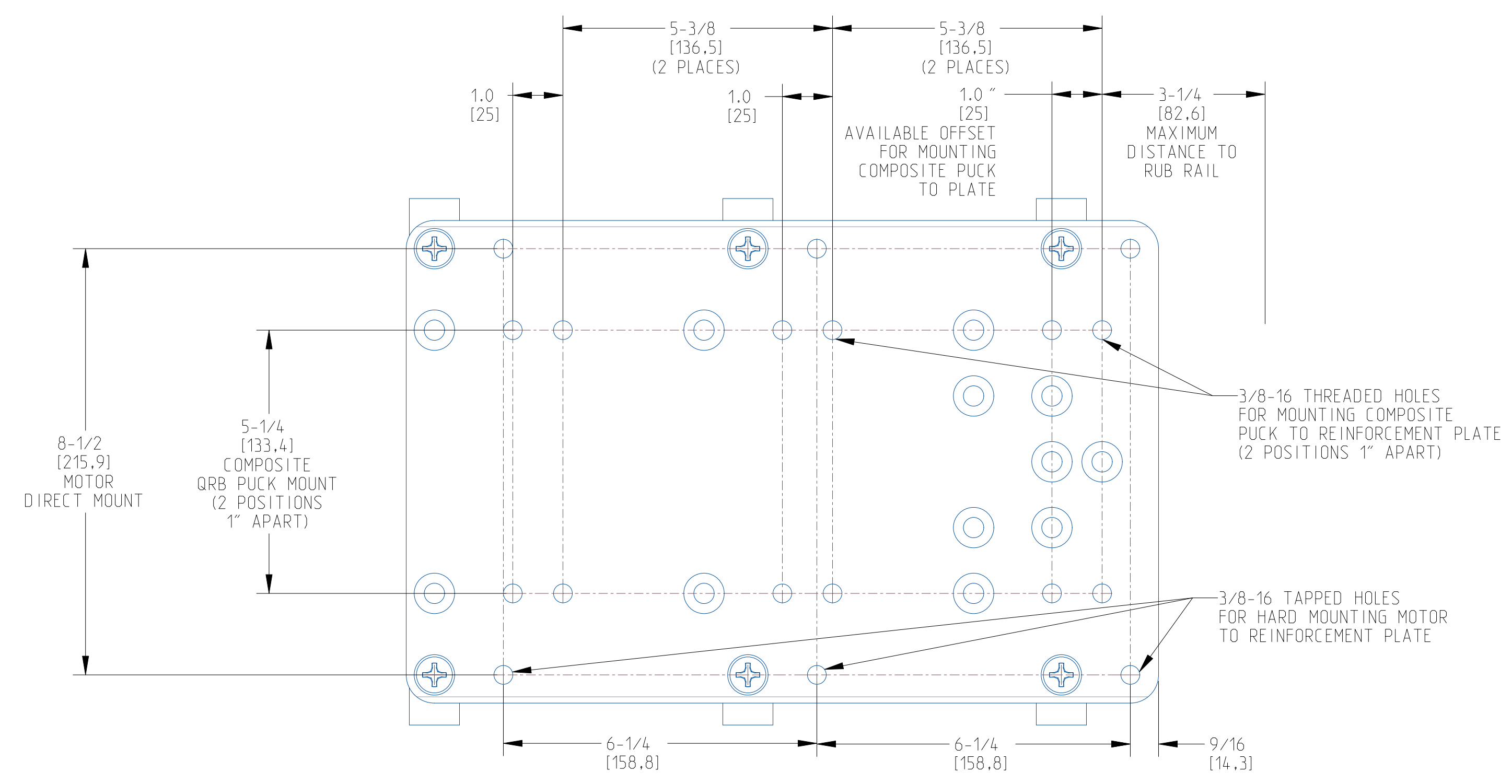
CAUTION: ALWAYS WEAR SAFETY GLASSES AND GLOVES. DISCONNECT ALL POWER BEFORE BEGINNING ANY WORK OR MAINTENANCE. JOHNSON OUTDOORS INC. IS NOT RESPONSIBLE FOR ANY DAMAGE DUE TO IMPROPER RIGGING OR INSTALLATION. IF YOU DO NOT HAVE THE SKILLS, EXPERIENCE AND TOOLS TO PERFORM THE FOLLOWING MAINTENANCE AND REPAIRS, WE RECOMMEND YOU SEEK THE HELP OF AN AUTHORIZED SERVICE CENTER. OR CONTACT OUR TECHNICAL SERVICE DEPARTMENT BY DIALING 800-227-6433.

## CUSTOMER DRAWING

JOHNSON OUTDOORS  
MARINE ELECTRONICS, INC.

DRAWING NAME:	MKA-58	C SIZE
DRAWING NO.:	CD0019	U/M: REV: A
	IN.	

REVISIONS				
REV.	ECN NO.	DESCRIPTION	BY	DATE



CUSTOMER DRAWING

JOHNSON OUTDOORS  
MARINE ELECTRONICS, INC.

DRAWING NAME:		MKA-58	C SIZE
DRAWING NO:		CD0019	
U/M:	IN.	REV:	A

CAUTION: ALWAYS WEAR SAFETY GLASSES AND GLOVES. DISCONNECT ALL POWER BEFORE BEGINNING ANY WORK OR MAINTENANCE. JOHNSON OUTDOORS INC. IS NOT RESPONSIBLE FOR ANY DAMAGE DUE TO IMPROPER RIGGING OR INSTALLATION. IF YOU DO NOT HAVE THE SKILLS, EXPERIENCE AND TOOLS TO PERFORM THE FOLLOWING MAINTENANCE AND REPAIRS, WE RECOMMEND YOU SEEK THE HELP OF AN AUTHORIZED SERVICE CENTER. OR CONTACT OUR TECHNICAL SERVICE DEPARTMENT BY DIALING 800-227-6433.