

Adler/Barbour ColdMachine Kits

Customized Do-It-Yourself Refrigeration

New
Quick-Connects



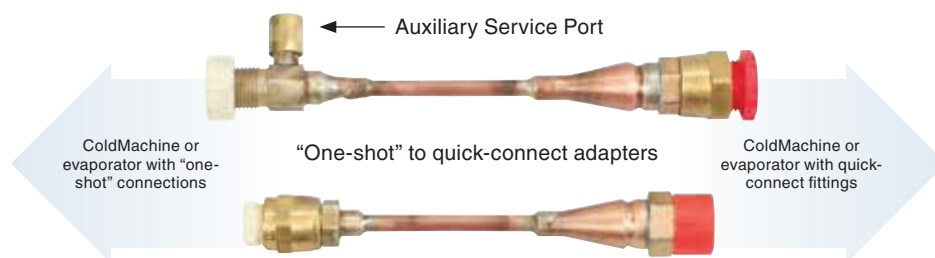
CU-100 ColdMachine (right) and VD-150 evaporating unit (left) shown

Performance, efficiency, and quality are hallmarks of Adler/Barbour ColdMachine Kits by Dometic. Two configurations are offered: The air-cooled CU-100 ColdMachine, and the air- and water-cooled CU-200 SuperColdMachine. Powered by a Secop BD50F compressor, these easy-to-install units provide up to 15 cu. ft. (424 liters) of refrigeration and work with a variety of 100-Series evaporators (see reverse side).

ColdMachines are specifically designed to survive the rigors of the harsh marine environment, and to provide exceptional performance in hot and humid conditions, erratic or low voltage, and continuous use.

ColdMachine kits now come with self-sealing quick-connect fittings for easy attachment. Unlike the old "one-shot" connections, quick-connect fittings can be disconnected and reconnected whenever necessary without loss of refrigerant or exposing the system to air or moisture.

Dometic also offers quick-connect adapters (P/N 755570000), shown below, which join "one-shot" units to their quick-connect counterparts (professional installation required).

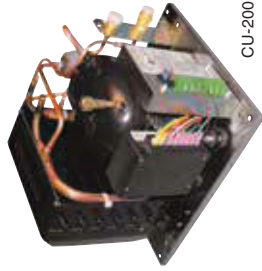


Key Benefits

- Now with self-sealing quick-connect fittings.
- Oversized air condensers.
- Up to 15 cu. ft. (424 liters) of refrigeration.
- Secop BD50F compressor provides 25% more cooling performance.
- Stainless-steel construction.
- Shrouded forced-air condensers.
- Modular phone-jack connection for thermostat.
- Quick-connect adapters with auxiliary service port keep older "one-shot" units in operation.
- Optimal performance in warmer waters.
- High-CFM fan.
- Built-in troubleshooting diagnostics.
- Environmentally safe R-134A refrigerant.
- Can be installed up to 15 ft. (4.57 m) from evaporator.
- Pre-charged and ready to install.

Technical Specifications for ColdMachines

MODEL	CU-100 COLDMACHINE	CU-200 SUPERCOLDMACHINE
Capacity	15.0 cu. ft. (424 liters)	15.0 cu. ft. (424 liters)
Voltage	12V DC	12V DC
Application	General Boating	Tropical-Water Boating
Dimensions (WxHxD)	10.0 x 7.5 x 11.1 in. (254 x 190 x 281 mm)	10.0 x 7.5 x 11.1 in. (254 x 190 x 281 mm)
Net Weight	18 lbs./8.2 kg.	18 lbs./8.2 kg.



CU-200 Super ColdMachine

Technical Specifications for VD Series Evaporating Units

MODEL	VD-150	VD-151	VD-152	VD-153	VD-160
Capacity	9.0 cu. ft. (254 liters)	9.0 cu. ft. (254 liters)	15.0 cu. ft. (424 liters)	15.0 cu. ft. (424 liters)	4 cu. ft. (113 liters)
Application	Medium-sized refrigerator to small freezer	Medium-sized refrigerator to small freezer	Large-sized refrigerator to medium freezer	Large-sized refrigerator to medium freezer	Medium- to small-sized freezer
Configuration	Closed evaporator	Closed evaporator with door	Closed evaporator	Closed evaporator with door	Power plate with holdover capabilities
Dimensions (WxHxD)	10.5 x 11.0 x 6.0 in. (266 x 279 x 152 mm)	10.75 x 7.0 x 11.25 in. (273 x 177 x 285 mm)	15.0 x 12.0 x 6.0 in. (381 x 304 x 152 mm)	15.5 x 7.5 x 12.0 in. (393 x 190 x 304 mm)	19.0 x 11.25 x 1.25 in. (482 x 285 x 31 mm)
Net Weight	12 lbs. (5.4 kg.)	10 lbs. (4.5 kg.)	13 lbs. (5.9 kg.)	14 lbs. (6.4 kg.)	23 lbs. (10.4 kg.)
Image					

OPTIONAL WATER COOLING KIT

Simplify water cooling installation for your CU-200 SuperColdMachine. Kit includes 12V DC water pump and mounting bracket, 5 ft. of 5/8 in. hose, 10 ft. of 3/8 in. hose, hose clamps, seawater strainer, 5/8 in. plastic through-hull discharge fitting, wiring diagram and mounting screws. Pump draws less than 1A and must be plumbed to a seawater source for operation. **P/N #C8350**



DOMETIC MARINE DIVISION
 2000 N. Andrews Ave. | Pompano Beach, FL 33069 USA | Tel. 954-973-2477 | Fax: 954-979-4414
www.Dometic.com/Marine | MarineSales@DometicUSA.com

24/7 TECH SUPPORT FOR UNITED STATES & CANADA:
 8:00 AM to 5:00 PM Eastern Time: 800-542-2477
 After hours and weekends: 888-440-4494

INTERNATIONAL SALES & SERVICES
 Europe & the Middle East: Call +44(0)1870-330-6101
 For all other areas visit our website to find your nearest distributor.

L-2693 Rev. 20101022

Specifications and availability subject to change without notice.



Dealer