

Mercury Marine®



Inflatable Boats



M Series 570

Mercury Inflatable Boats

At Mercury, we are dedicated to manufacturing the finest marine products in the world. Our line of inflatable boats is no exception. Mercury Inflatable Boats utilizes the most current and highest-quality processes in the industry. This commitment to building a top-of-the-line boat is at the heart of our High-Performance Product Development (HPPD) philosophy.

Mercury's ISO 9001:2000 certified factories assure a level of excellence in all aspects of production, making our boat packages the best - from bow to stern.

Our Performance Inflatable Boats are technologically advanced with VITECH hulls and thermo-welded fabric.

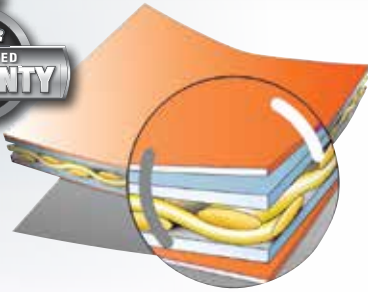
Features & Equipment	4
Dinghy Series	5
Roll-up Series	6
Sport Series	7
Air Deck Series	8
Dynamic Series	9
Ocean Runner	10
Heavy Duty Series	11
M Series	12
Specifications	14



The Mercury Advantage



PVC

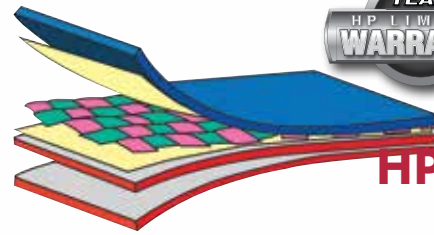


Mercury Inflatable PVC boats are produced with Mehler Haku, a heavy-duty, long-life fabric, which offers excellent resistance against UV, cuts, abrasions and normal wear and tear. PVC fabric also offers maximum resistance against temperature, moisture and dirt.

Mercury Inflatable PVC boats offer one of the best guarantees in the market including a 5-year limited warranty on the Haku fabric and air-holding thermowelded seams giving you assurance of our commitment to quality.



HP



Mercury Inflatable HP boats are produced with Achilles Chlorosulfonated Polyethylene, a super-tough, long-lasting fabric, which offers superior performance in most extreme conditions: resistance to abrasion, hydrocarbons, UV light and fading.

Mercury Inflatable HP boats offer the best guarantee in the market including a 10-year limited warranty on the Achilles fabric and air-holding seams giving you assurance of our commitment to quality.



All accessories on Mercury Inflatable PVC boats are adhered by High-Frequency welding, which provides superior durability and a stronger bond between the accessory and the boat. The High-Frequency welding technique also eliminates excess glue marks, which turn yellow with exposure to the sun.



The Haku fabric tubes on Mercury Inflatable PVC boats are assembled using our exclusive thermo-welding technique. This process combines fusion welding with high-pressure bonding of double internal/external tapes, and is used to assemble the different parts of the tubes with welds stronger than the material itself.



Mercury Inflatable PVC boat accessories are designed and produced for Mercury Inflatable Boats which differentiate our products from our competitors. The PVC accessories feature the following: feathering rowlock, combined oar holder / life line attaching point, combined cleat / grab handle, styled lifeline attaching points and oars / paddles designed without aluminum / aluminum joints for extra strength and corrosion resistance.



Mercury Inflatable HP boat accessories are all made of 100% HP (Chlorosulfonated Polyethylene) formulated by a US laboratory, the identical material used in the fabric of the boat. The 100% HP accessories are extremely strong against weathering, UV light and most chemical pollutants. Mercury Inflatable HP boat accessories are the only 100% HP components on the market, making them far superior to the EPDM or MPR accessories used by the competitors.

Standard Features & Benefits

Bow Handles: Extra handles inside the tube provide a more secure grip as well as additional holding points.



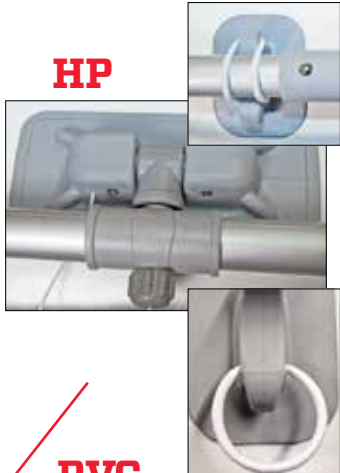
Inflatable Keel: All models are equipped with an inflatable keel under the floor for better performance (excluding rigid hull boats).



Fiber-Reinforced Polymer (FRP) Seat: All Mercury Inflatable Boats feature a durable FRP seat to eliminate cracking, decay and slivers.



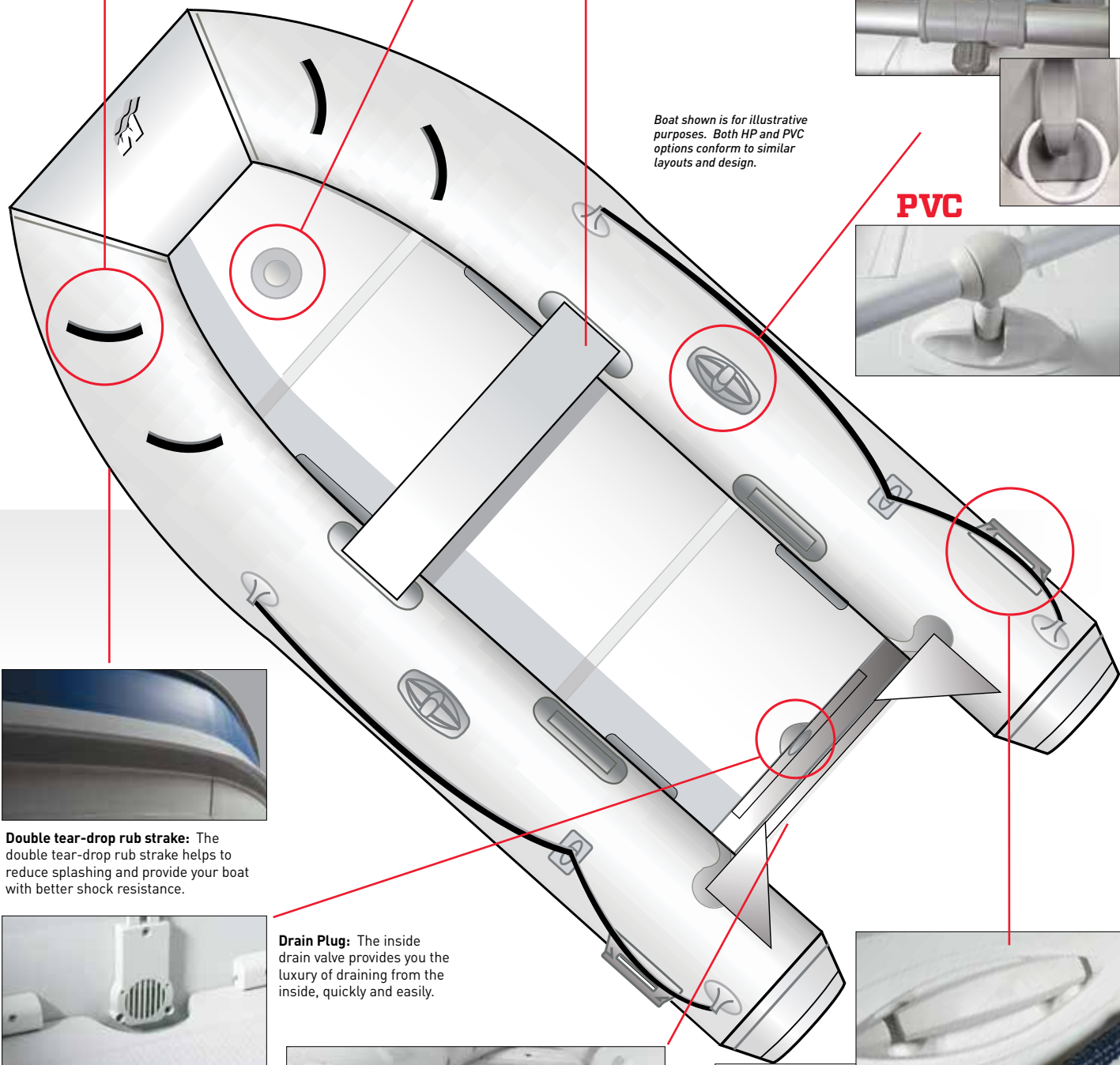
Oarlock System: The oarlock system design has been redesigned so the oars can be fixed in a simple and secure way.



HP

PVC

Boat shown is for illustrative purposes. Both HP and PVC options conform to similar layouts and design.



Double tear-drop rub strake: The double tear-drop rub strake helps to reduce splashing and provide your boat with better shock resistance.



Drain Plug: The inside drain valve provides you the luxury of draining from the inside, quickly and easily.



Fabric Wrapped Transom: The Fabric wrapped transom protects against cracking and decay. All transoms are made waterproof by wrapping the transom with fabric, which ensure greater durability compared to traditional plywood transoms.



PVC



HP

Lifting Handles: The boats are equipped with contemporary lifting handles that also can be used as efficient rope holders.



200 Dinghy

Dinghy

200 / 240 / 270



First-Time Boat Owners

The NEW Dinghy models are compact and very economical for the first-time inflatable boat buyer. These new models offer two additional inflatable compartments (floor and keel) to accompany the internal air chambers to increase safety. The Dinghy models are ideal for families on vacation who want to have fun near the shore, or the individual who has space constraints and cannot transport a large boat. The Dinghy offers a five-year limited warranty.

Model	Length	Weight	Persons	Max hp
200 PVC light gray	6' 7" (201cm)	41 lb (17kg)	2	2.5
240 PVC light gray	7' 10" (240cm)	49 lb (22kg)	3	3.5
270 PVC light gray	8' 10" (270cm)	55 lb (25kg)	3	5



Roll Up 240



Ship-to-Shore & More

Compact and lightweight, this economical inflatable boat is ideal as a ship-to-shore tender when speed is not your first priority.

The Roll Up is also great for the family on the go. Bring your boat with you to the lake, the beach or wherever!

With a set-up time of just minutes, no trailer and no special equipment, this boat will allow easy access to some of those places you've only seen from the shore.

Model	Length	Weight	Persons	Max hp
240 PVC light gray	7' 3" (220cm)	49 lb (22kg)	3	4



240 Roll Up



270 Sport

Sport / Adventure

240 / 270 / 310 / 340



Capable, Very Capable

The Sport series boats are versatile, designed to be an ideal alternative to their aluminum and fiberglass counterparts. Beyond their portability and economy, the Sport & Adventure Series boast serious strength, maneuverability and performance. With lower center of gravity and high-strength FRP floors, these boats are made to go the distance.

Mercury's Fiber-Reinforced Polymer (FRP) floorboards are waterproof, offer no degradation and are long-lasting, while providing more flexibility than the standard wooden floorboards. FRP floorboards also have a non-skid surface to improve the safety of your passengers.

Model	Length	Weight	Persons	Max hp
240 PVC light gray	7' 3" (220cm)	94 lb (43kg)	3	5
270 PVC light gray	8' 4" (250cm)	111 lb (50kg)	4	8
310 PVC light gray	9' 6" (290cm)	122 lb (55kg)	4	15
340 PVC light gray	10' 6" (320cm)	133 lb (60kg)	5	20
270 PVC green	8' 4" (250cm)	111 lb (50kg)	4	8
310 PVC green	9' 6" (290cm)	122 lb (55kg)	4	15
340 PVC green	10' 6" (320cm)	133 lb (60kg)	5	20



Air Deck

240 / 270 / 310 / 340



Convenience & Comfort

These general-purpose boats offer the lightweight ease of transport with the body-pleasing feel of an air-filled floor—soft enough to give up to five people a stable deck surface. These maneuverable boats boast a roomy interior, ready for ship-to-shore use or for regular family outings. Transport has never been easier—with no floor boards, Air Deck boats can be stowed most anywhere. Take the fun of boating wherever you go. Mercury Air Deck boats are the perfect complement to your outdoor lifestyle.

Drop-stitched air floor – high-pressure air floor offers quick assembly and small storage space while still providing excellent support. Thousands of drop-stitched fibers give the Mercury air floor 50% more rigidity than traditional air floor systems.

Model	Length	Weight	Persons	Max hp
240 PVC light gray	7' 3" (220cm)	79 lb (36kg)	3	5
240 HP white	7' 3" (220cm)	80 lb (36kg)	3	5
270 PVC light gray	8' 4" (250cm)	86 lb (39kg)	4	8
270 HP white	8' 4" (250cm)	95 lb (43kg)	4	8
310 PVC light gray	9' 6" (290cm)	92 lb (42kg)	4	15
310 HP white	9' 6" (290cm)	103 lb (47kg)	4	15
340 PVC light gray	10' 6" (320cm)	99 lb (45kg)	5	20
340 HP white	10' 6" (320cm)	111 lb (50kg)	5	20



310 Air Deck





310 Dynamic RIB

Dynamic RIB

260 / 280 / 310



Best of Both Worlds

Mercury's Dynamic Rigid Inflatable Boat (RIB) gives you the hull strength of a conventional craft with the exceptional stability of an inflatable boat. Each model in the Dynamic RIB Series features a laminated fiberglass hull manufactured using the VITECH (Vacuum Injection Technology) process, molding the hull and transom as one piece for incredible strength and durability. The roomy interiors allow for carrying plenty of cargo.

Single-skin VITECH hulls provide incredible strength-to-weight ratio while the non-skid deck provides increased safety when entering/exiting. These super-lightweight boats are strong performers that give you reliability and a fun time on the water.



Model	Length	Weight	Persons	Max hp
260 PVC light gray	8' 2" (250cm)	74 lb (34kg)	3	5
260 HP white	8' 2" (250cm)	79 lb (36kg)	3	5
280 PVC light gray	8' 10" (270cm)	82 lb (37kg)	4	8
280 HP white	8' 10" (270cm)	89 lb (40kg)	4	8
310 PVC light gray	9' 10" (300cm)	110 lb (50kg)	4	15
310 HP white	9' 10" (300cm)	114 lb (52kg)	4	15



Ocean Runner

300 / 350 / 430 / 460



The sandwich-laminated fiberglass V-hull offers incredible maneuverability and performance. The aggressive styling will definitely catch your eye. The way these boats perform will have you catching your breath.

Nothing Dinghy About It

The Ocean Runner Series brings a truly performance-engineered, stepped fiberglass V-hull together with a very stable inflatable tube, making Ocean Runner one of the finest Rigid Inflatable Boats (RIB) in its price range. The extremely strong, durable hull and transom are able to take up to a 30 EFI FourStroke. Ocean Runner's tight handling and outright performance will amaze you.

Model	Length	Weight	Persons	Max hp
300 PVC light grey	9' 6" (290cm)	140 lb (64kg)	4	15
300 HP white	9' 6" (290cm)	146 lb (66kg)	4	15
350 PVC light grey	11' 2" (340cm)	194 lb (88kg)	5	25
350 HP white	11' 2" (340cm)	201 lb (91kg)	5	25
430 PVC light grey	13' 9" (419cm)	261 lb (119kg)	7	40
430 HP white	13' 9" (419cm)	268 lb (122kg)	7	40
460 PVC light grey	15' 1" (460cm)	280 lb (127kg)	8	60
460 HP white	15' 1" (460cm)	280 lb (127kg)	8	60



Optional Console and Seat



896397006



896397005



350 Ocean Runner



430 Heavy Duty

Heavy Duty
380 / 430 / 470 / 530



Built to Take It - Plus Your Crew and Gear... Most Anywhere

Mercury's Heavy Duty Series of inflatable boats is designed for daily pleasure or professional use. They are built strong enough to take larger engines, with the largest model able to take up to a 30 hp FourStroke. Special reinforced fabrics and a durable aluminum floor will handle you and all of your gear, year after year. Amazing is simply an understatement. Whether you choose to stay on board or roll off the pliable sides with your dive tank on, the Heavy Duty Series is ready for your next outing.



Model	Length	Weight	Persons	Max hp
380 PVC red	12' (365cm)	216 lb (98kg)	6	25
380 HP red	12' (365cm)	233 lb (106kg)	6	25
430 PVC red	13' 9" (419cm)	261 lb (119kg)	8	30
430 HP red	13' 9" (419cm)	279 lb (127kg)	8	30
470 PVC red	15' 5" (470cm)	349 lb (159kg)	10	50
470 HP red	15' 5" (470cm)	363 lb (178kg)	10	50
530 HP red	16' 11" (515cm)	401 lb (182kg)	12	50



M Series

350 / 400 / 570 / 620

Incredibly Complete

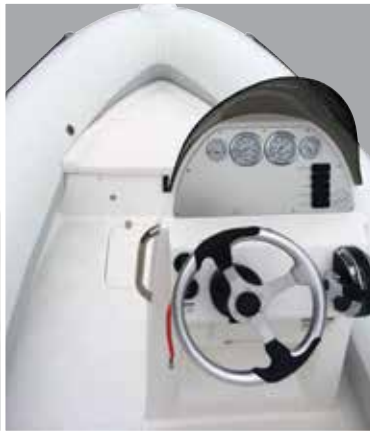
With a standard list of features and options like no other in its class, the M Series is the perfect 'get you there in style' boat. Whether it's a day excursion with the family or a ship-to-shore tender for dinner on the shore, the M Series will impress you from bow to stern.



570 M Series



620 M Series



The All New M570 & M620

These boats are outfitted for some serious time and activity on the water. The new improved M570 and M620 can fit virtually any boating lifestyle. The generous beam allows for more use of the inner space for storage but it retains the traditional values of a RIB, including ease of transport and incredible seaworthy stability.



Model	Length	Weight	Persons	Max hp
350 HP white	11' 5" (345cm)	675 lb (306kg)	4	40
400 HP white	13' 0" (396cm)	775 lb (352kg)	5	50
570 HP white	18' 4" (558cm)	925 lb (420kg)	15	115
620 HP white	20' 2" (620cm)	1200 lb (545kg)	17	150



Specifications

<i>PVC Models</i>	<i>Color</i>	<i>Fabric</i>	<i>Fabric Thickness (Mm)</i>	<i>Max People</i>	<i>Max Load Lbs</i>	<i>Max Engine HP</i>	<i>Max Engine Wt (Lbs)</i>	<i>Shaft Length</i>	<i>Boat Length Ft / CM</i>
200 Dinghy	Gray	Haku	0.6	2	562	2.5	44	15"	6'7"/201
240 Dinghy	Gray	Haku	0.6	3	694	3.5	44	15"	7'10"/239
270 Dinghy	Gray	Haku	0.6	3	783	5	66	15"	8'10"/269
240 Roll Up	Gray	Haku	0.7	3	694	4	66	15"	7'3"/220
240 Air Deck	Gray	Haku	0.85	3	1058	5	66	15"	7'3"/220
270 Air Deck	Gray	Haku	0.85	4	1202	8	88	15"	8'4"/250
310 Air Deck	Gray	Haku	0.85	4	1400	15	132	15"	9'6"/290
340 Air Deck	Gray	Haku	0.85	5	1477	20	132	15"	10'6"/320
240 Sport	Gray	Haku	0.85	3	860	5	66	15"	7'3"/220
270 Sport	Gray	Haku	0.85	4	992	8	88	15"	8'4"/250
310 Sport	Gray	Haku	0.85	4	1146	15	132	15"	9'6"/290
340 Sport	Gray	Haku	0.85	5	1257	20	132	15"	10'6"/320
270 Adventure Sport	Green	Haku	0.85	4	992	8	88	15"	8'4"/250
310 Adventure Sport	Green	Haku	0.85	4	1146	15	132	15"	9'6"/290
340 Adventure Sport	Green	Haku	0.85	5	1257	20	132	15"	10'6"/320
380 Heavy Duty	Red	Haku	1.15	6	1653	25	187	15"	12'0"/365
430 Heavy Duty	Red	Haku	1.15	8	2094	30	187	15"	13'9"/419
470 Heavy Duty	Red	Haku	1.15	10	2646	50	287	20"	15'5"/470
300 Ocean Runner	Gray	Haku	0.85	4	926	15	132	15"	9'6"/290
350 Ocean Runner	Gray	Haku	0.85	5	1135	25	187	15"	11'2"/340
430 Ocean Runner	Gray	Haku	0.85	8	1764	40	243	20"	13'9"/220
460 Ocean Runner	Gray	Haku	0.85	8	1984	60	287	20"	15'1"/460
260 Dynamic	Gray	Haku	0.85	3	750	5	66	15"	8'2"/250
280 Dynamic	Gray	Haku	0.85	4	805	8	88	15"	8'10"/270
310 Dynamic	Gray	Haku	0.85	4	1003	15	132	15"	9'10"/300
<i>HP Models</i>	<i>Color</i>	<i>Fabric</i>	<i>Fabric Thickness (Mm)</i>	<i>Max People</i>	<i>Max Load Lbs</i>	<i>Max Engine HP</i>	<i>Max Engine Wt (Lbs)</i>	<i>Shaft Length</i>	<i>Boat Length Ft / CM</i>
240 Air Deck HP	White	Achilles	0.84	3	1058	5	66	15"	7'3"/220
270 Air Deck HP	White	Achilles	0.84	4	1202	8	88	15"	8'4"/250
310 Air Deck HP	White	Achilles	0.84	4	1400	15	132	15"	9'6"/290
340 Air Deck HP	White	Achilles	0.84	5	1477	20	132	15"	10'6"/320
380 Heavy Duty HP	Red	Achilles	1.1	6	1653	25	187	15"	12'0"/365
430 Heavy Duty HP	Red	Achilles	1.1	8	2094	30	187	15"	13'9"/419
470 Heavy Duty HP	Red	Achilles	1.1	10	2646	50	287	20"	15'5"/470
530 Heavy Duty HP	Red	Achilles	1.1	12	3307	50	287	20"	16'11"/515
300 Ocean Runner HP	White	Achilles	0.84	4	926	15	132	15"	9'6"/290
350 Ocean Runner HP	White	Achilles	0.84	5	1135	25	187	15"	11'2"/340
430 Ocean Runner HP	White	Achilles	0.84	7	1764	40	243	20"	13'9"/419
460 Ocean Runner HP	White	Achilles	0.84	8	1984	60	287	20"	15'1"/460
260 Dynamic HP	White	Achilles	0.84	3	750	5	66	15"	8'2"/250
280 Dynamic HP	White	Achilles	0.84	4	805	8	88	15"	8'10"/270
310 Dynamic HP	White	Achilles	0.84	4	1003	15	132	15"	9'10"/300
M 350 HP	White	Achilles	0.84	4	776	40	243	20"	11'5"/345
M 400 HP	White	Achilles	0.84	5	1276	50	287	20"	13.0/396
M 570 HP	White	Pennel	828	15	3190	115	462	20"	18'4"/558
M 620 HP	White	Pennel	828	17	4070	150	602	20"	20'2"/620

<i>Beam Width Ft/ CM</i>	<i>Inside Length Ft/CM</i>	<i>Boat Wt. Lbs</i>	<i>Tube Diam Inches</i>	<i>Tube Pressure Psi/Bar</i>	<i>Air Chambers</i>	<i>Air Keel</i>	<i>Seat</i>	<i>Carrying Bag</i>	<i>2 - Oars or Paddles</i>	<i>Bow Locker</i>
4'1"/124	3'9"/114	41	13"	3.6/1.63	2+keel+floor	Yes	x	x	x	
4'4"/132	5'1"/154	49	13"	3.6/1.63	2+keel+floor	Yes	x	x	x	
4'4"/132	5'9"/175	55	13"	3.6/1.63	2+keel+floor	Yes	x	x	x	
4'7"/140	5'0"/153	49	14"	3.6/1.63	2	No	x	x	x	
5'1"/154	4'9"/145	79	16"	3.6/1.63	3+keel+floor	Yes	x	x	x	
5'1"/154	5'7"/171	86	16"	3.6/1.63	3+keel+floor	Yes	x	x	x	
5'1"/154	6'9"/206	92	16"	3.6/1.63	3+keel+floor	Yes	x	x	x	
5'1"/154	7'7"/230	99	16"	3.6/1.63	3+keel+floor	Yes	x	x	x	
5'1"/154	4'9"/145	94	16"	3.6/1.63	3+keel	Yes	x	x	x	
5'1"/154	5'7"/171	111	16"	3.6/1.63	3+keel	Yes	x	x	x	
5'1"/154	6'9"/206	122	16"	3.6/1.63	3+keel	Yes	x	x	x	
5'1"/154	7'7"/230	133	16"	3.6/1.63	3+keel	Yes	x	x	x	
5'1"/154	5'7"/171	111	16"	3.6/1.63	3+keel	Yes	x	x	x	
5'1"/154	6'9"/206	122	16"	3.6/1.63	3+keel	Yes	x	x	x	
5'1"/154	7'7"/230	133	16"	3.6/1.63	3+keel	Yes	x	x	x	
5'9"/175	8'7"/261	216	18"	3.6/1.63	3+keel	Yes	x	x	x	
6'2"/188	10'2"/309	261	19"	3.6/1.63	3+keel	Yes	x	x	x	
7'1"/216	10'11"/332	349	21"	3.6/1.63	5+keel	Yes		x	x	
5'4"/162	6'4"/194	140	16"	3.6/1.63	3	No	x	x	x	
5'9"/176	7'8"/234	194	16"	3.6/1.63	3	No	x	x	x	x
6'4"/192	10'2"/310	261	19"	3.6/1.63	4	No	x	x	x	x
6'6"/198	11'2"/340	280	20"	3.6/1.63	4	No	x	x	x	x
4'9"/145	5'0"/153	74	15"	3.6/1.63	3	No	x	x	x	
4'9"/145	6'0"/183	82	15"	3.6/1.63	3	No	x	x	x	
5'3"/160	6'4"/194	110	16"	3.6/1.63	3	No	x	x	x	
<i>Beam Width Ft/ CM</i>	<i>Inside Length Ft/CM</i>	<i>Boat Wt. Lbs</i>	<i>Tube Diam Inches</i>	<i>Tube Pressure Psi/Bar</i>	<i>Air Chambers</i>	<i>Air Keel</i>	<i>Seat</i>	<i>Carrying Bag</i>	<i>2 - Oars or Paddles</i>	<i>Bow Locker</i>
5'1"/154	4'9"/145	80	16"	3.6/1.63	3+keel+floor	Yes	x	x	x	
4'1"/124	5'7"/171	95	16"	3.6/1.63	3+keel+floor	Yes	x	x	x	
4'1"/124	6'9"/206	103	16"	3.6/1.63	3+keel+floor	Yes	x	x	x	
4'1"/124	7'7"/230	111	16"	3.6/1.63	3+keel+floor	Yes	x	x	x	
5'9"/175	8'7"/261	233	18"	3.6/1.63	3+keel	Yes	x	x	x	
6'2"/188	10'2"/309	279	19"	3.6/1.63	3+keel	Yes	x	x	x	
7'1"/216	10'11"/332	363	21"	3.6/1.63	5+keel	Yes		x	x	
7'3"/220	12'6"/380	401	22"	3.6/1.63	5+keel	Yes		x	x	
5'4"/162	6'4"/194	146	16"	3.6/1.63	3	No	x	x	x	
5'9"/176	7'8"/234	201	16"	3.6/1.63	3	No	x	x	x	x
6'4"/192	10'2"/310	268	19"	3.6/1.63	4	No	x	x	x	x
6'6"/198	11'2"/340	280	20"	3.6/1.63	4	No	x	x	x	x
4'9"/145	5'0"/153	79	15"	3.6/1.63	3	No	x	x	x	
4'9"/145	6'0"/183	89	15"	3.6/1.63	3	No	x	x	x	
5'3"/160	6'4"/194	114	16"	3.6/1.63	3	No	x	x	x	
6'0"/183	4'10"/147	675	17"	3.6/1.63	3	No	x			x
6'2"/188	6'0"/183	775	18"	3.6/1.63	3	No	x			x
7'10"/239	7'8"/234	925	20"	3.6/1.63	5	No	x			x
8'2"/250	8'0"/244	1200	21"	3.6/1.63	5	No	x			x

Get started at MercuryMarine.com



P/N 90-8M0117008 EFFECTIVE JANUARY 2016

©2016 MERCURY MARINE, a division of Brunswick Corporation. All rights reserved.
Reproduction in whole or in part without permission is prohibited.

