

# Fugawi Marine 5... the streamlined way to manage a boat's navigation systems

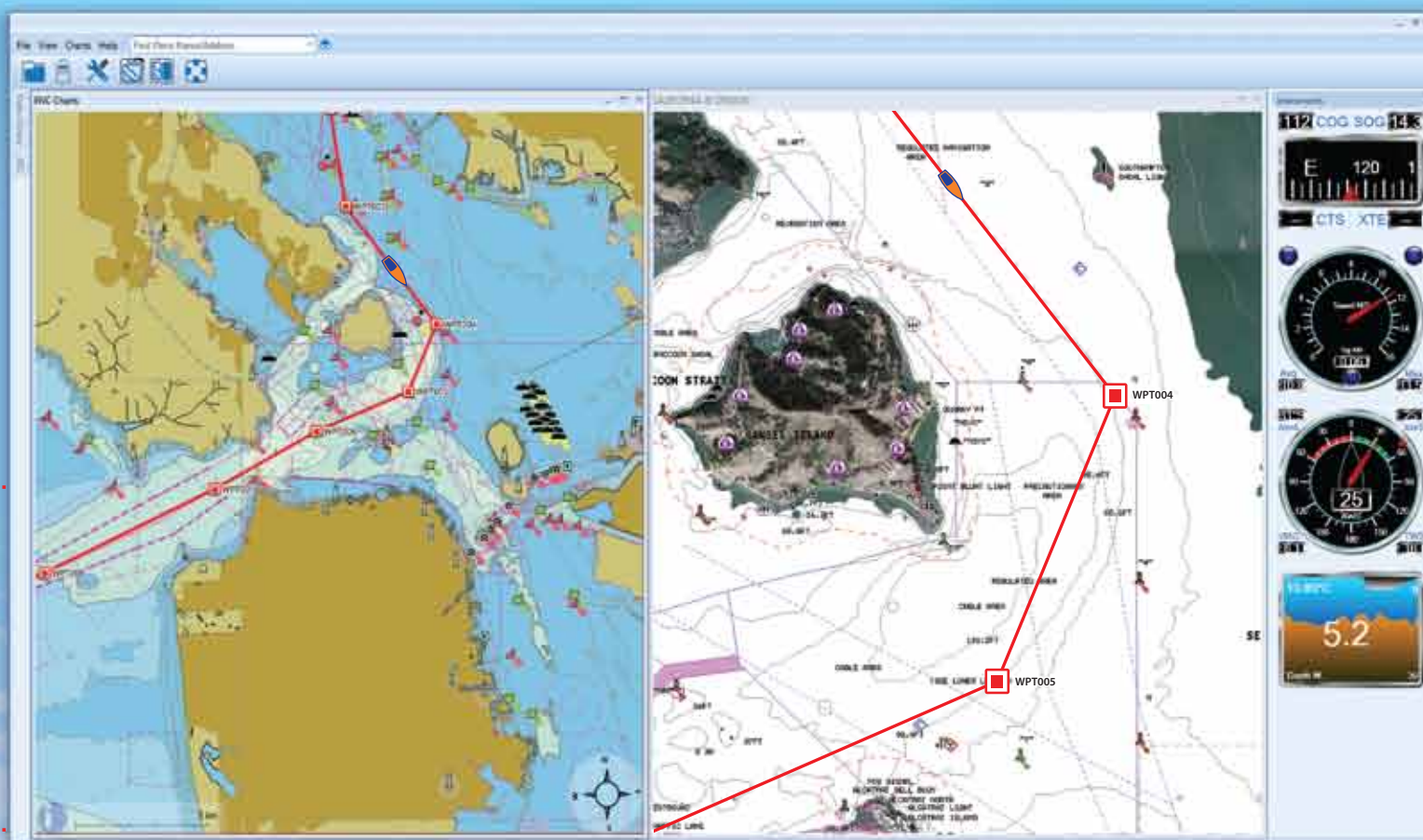
Fugawi Marine 5 leads the way for a new generation of navigation software. Now it is easier for sailors, motor boaters and fisherman to manage their boat's navigation systems to suit their needs – and have more fun.

- Downloading and managing multiple charts is now simpler than ever
- Routes can be planned and shared with friends with a few clicks
- A variety of tablets and displays can be interconnected with unprecedented ease

Recreational boaters can forget about complex menus and poor connectivity of older generations of software. Fugawi Marine 5 – it's navigation made easy!

## Take advantage of the latest Microsoft® Windows® technology

- Standard and intuitive commands and interfaces
- Compatible with touchscreen tablets running Microsoft® Windows® 7 and 8



## All your marine instruments in one place

Whether using one instrument or a network of NMEA 0183 or NMEA 2000® devices, with industry leading Actisense® gateways, Fugawi Marine 5 displays all your vital instruments clearly on your screen.

- Comes with 5 standard gauges: compass, speedometer, apparent wind speed and direction, depth graph, and vital navigation data
- Optional instrument suite add-on can be included to expand over 20 additional displays

## Clearly display AIS vessels

"See" around capes, river bends, ships, and other obstructions without the limitations of radar, even in fog and darkness by viewing the size and position of AIS equipped vessels on the charts.\*

- Calculates time and closest point of approach to help make smart anti-collision decisions
- Quickly and easily filter and organize AIS data



\*Requires an optional AIS receiver

## Connect and share with the Fugawi cloud

The Fugawi X-Traversal™ cloud service makes it easy to share points of interests, and journeys with friends and charts between devices.

- Download and install charts from X-Traversal.com with a few clicks
- Automatic chart updates from X-Traversal
- Automatic data backup of your travels
- Share routes with friends on Facebook or display them in Google Earth

## Easily connect to other devices

Move route and waypoint data with unprecedented ease. Connect to leading chart plotters and displays using WiFi.

- Share data with Google Earth and other software
- Move and convert data to and from leading chart plotters including Lowrance, Garmin and Raymarine
- Transfer data between Fugawi Marine 5 on PC and iNavX for iPad or iPhone

## Support for multiple chart formats

Don't be locked into a single chart format. Fugawi Marine 5 supports a wide and ever-growing list of charts which can now be viewed side by side.

- View different charts as tiles or in separate tabs
- View the same chart at multiple zoom levels for easy route planning
- Built-in support for Navionics, NOAA, CHS, nv-charts, automatic X-Traversal chart downloads, and more



*Fugawi Marine 5 full featured, fast and so easy-to-use you won't need a manual*

## Fugawi Marine 5 technical details

### Full navigational features:

- Shows track and current location on the screen
- Speed, waypoints, routes, distance to go, course to steer shown clearly and simply

### All new chart rendering:

- New multi chart view to display all your charts as tiles or tabs
- Quilted raster charts for a seamless view and more intuitive navigation
- Simple chart rotation and course-ahead/course-up views
- Query S-57 or Navionics features such as marks, lights and obstructions
- Customize depth contours for shallow and deep navigation areas on vector charts
- Customize units for soundings on vector charts

### Chart format support:

- Marine charts from Fugawi's X-Traverse.com
- Navionics® Platinum+, Platinum, Gold+, HotMaps® Platinum and Hotmaps Premium via Plug-and-Play Navionics chip manufactured after April 2010 (charts copied to hard drive)
- S-57 charts (inc. NOAA ENC®, Army Corps iENC)
- S-63 Encrypted ENC charts (requires user permit)
- BSB Version 1 through 5 raster nautical charts (inc. NOAA RNC™, MAPTECH™, CHS, Fugawi)
- nv-charts (BSB/EAP from Nautische Veröffentlichung Verlagsgesell)
- Hilton, Blue Latitude, Wavyline, Solteknik charts and more
- See tides and currents integrated with Navionics charts
- Automatic download and updates of NOAA charts

### Route planning and user data:



- Save unlimited waypoints, routes and tracks in the data library
- Create waypoints, routes and tracks graphically or in the library
- Customize icons, line styles, attach photos or sounds to waypoints

### NMEA inputs:

- NMEA 2000® input via the award winning Actisense NGT-1 gateway
- Supports up to 3 NMEA 0183 inputs (requires serial to USB adaptor)

### System Requirements:

Microsoft® Windows® 8, 7, Vista or XP SP 3  
Mouse, pointing device, or touch screen  
Minimum 1024 x 768 resolution display or better (graphics accelerator recommended)  
USB port(s) for GPS and other data inputs

Connect with FUGAWI online  

### Instrument display:

- Clear, re-orderable analogue and digital style instrument displays show data from the NMEA 2000 network or from up to three NMEA 0183 inputs
- GPS compass display (also shows course over ground, speed over ground, course to steer and cross track error)
- Speedometer (also shows average speed, maximum speed and trip distance)
- Apparent wind speed and angle (also shows true wind speed and velocity made good to windward)
- Depth graph (also shows water temperature)
- Certain data, such as velocity made good to windward calculated from specific inputs
- **Optional Instruments Suite Add-on** enhances Fugawi Marine 5 by adding instruments for twin engines, magnetic compass, digital heading, digital depth, digital course over ground, digital speed over ground, tachometer, ambient temperature, speed through water, multiple tank and engine gauges, battery gauges, barometer, current gauge, water temperature, real-time wind polar graph, apparent wind speed, apparent wind angle, true wind speed, true wind angle, velocity made good to windward, sail performance efficiency, and heel angle

### AIS support:

- Supports Class A and Class B messages via NMEA 0183 or NMEA 2000 input
- Calculates CPA and TCPA
- Graphically displays vessels in collision danger in bold
- Dead reckoning of AIS vessels between AIS updates
- Uses vessel Rate of Turn to plot curved course prediction path
- Vessels color coded and drawn to scale
- Sortable data grid of vessels showing vessel name, AIS class, MMSI #, vessel type, CPA, TCPA, range and bearing to vessel, speed, heading, COG, rate of turn, call sign, length, beam, draught, destination, IMON, ETA, last message age, and navigational status

### Data transfer:

- Supports waypoint, route and track transfer to and from;
  - GPX files
  - KMZ files
  - Lowrance .USR Ver 3 files
  - Raymarine .FSH files
  - Direct NMEA 0183 transfer
  - Direct WiFi connection to new Raymarine® e- and c- series MFDs
  - Direct cable connection to Raymarine SeaTalk<sup>hs</sup> networks
- Direct transfer and backup to the included Fugawi X-Traverse cloud
- One click upload of waypoints, routes and tracks to Facebook

**Free upgrades for 2 years**

For the latest detailed specifications please go to [marine5.fugawi.com](http://marine5.fugawi.com)

Fugawi Marine 5: FUGMAR-5; Instrument Add-on Suite: FUGMAR-5-IS.

**FUGAWI**<sup>™</sup>  
KNOW WHERE YOU ARE GOING

# Fugawi<sup>™</sup> Marine 5 Navigation streamlined



## Fugawi Marine 5 technical details

### Full navigational features:

- Shows track and current location on the screen
- Speed, waypoints, routes, distance to go, course to steer shown clearly and simply

### All new chart rendering:

- New multi chart view to display all your charts as tiles or tabs
- Quilted raster charts for a seamless view and more intuitive navigation
- Simple chart rotation and course-ahead/course-up views
- Query S-57 or Navionics features such as marks, lights and obstructions
- Customize depth contours for shallow and deep navigation areas on vector charts
- Customize units for soundings on vector charts

### Chart format support:

- Marine charts from Fugawi's X-Traverse.com
- Navionics® Platinum+, Platinum, Gold+, HotMaps® Platinum and Hotmaps Premium via Plug-and-Play Navionics chip manufactured after April 2010 (charts copied to hard drive)
- S-57 charts (inc. NOAA ENC®, Army Corps iENC)
- S-63 Encrypted ENC charts (requires user permit)
- BSB Version 1 through 5 raster nautical charts (inc. NOAA RNC™, MAPTECH™, CHS, Fugawi)
- nv-charts (BSB/EAP from Nautische Veröffentlichung Verlagsgesell)
- Hilton, Blue Latitude, Wavyline, Solteknik charts and more
- See tides and currents integrated with Navionics charts
- Automatic download and updates of NOAA charts

### Route planning and user data:

- Save unlimited waypoints, routes and tracks in the data library
- Create waypoints, routes and tracks graphically or in the library
- Customize icons, line styles, attach photos or sounds to waypoints

### NMEA inputs:

- NMEA 2000® input via the award winning Actisense NGT-1 gateway
- Supports up to 3 NMEA 0183 inputs (requires serial to USB adaptor)



### System Requirements:

Microsoft® Windows® 8, 7, Vista or XP SP 3  
Mouse, pointing device, or touch screen  
Minimum 1024 x 768 resolution display or better (graphics accelerator recommended)  
USB port(s) for GPS and other data inputs

Connect with FUGAWI online  

### Instrument display:

- Clear, re-orderable analogue and digital style instrument displays show data from the NMEA 2000 network or from up to three NMEA 0183 inputs
- GPS compass display (also shows course over ground, speed over ground, course to steer and cross track error)
- Speedometer (also shows average speed, maximum speed and trip distance)
- Apparent wind speed and angle (also shows true wind speed and velocity made good to windward)
- Depth graph (also shows water temperature)
- Certain data, such as velocity made good to windward calculated from specific inputs
- **Optional Instruments Suite Add-on** enhances Fugawi Marine 5 by adding instruments for twin engines, magnetic compass, digital heading, digital depth, digital course over ground, digital speed over ground, tachometer, ambient temperature, speed through water, multiple tank and engine gauges, battery gauges, barometer, current gauge, water temperature, real-time wind polar graph, apparent wind speed, apparent wind angle, true wind speed, true wind angle, velocity made good to windward, sail performance efficiency, and heel angle

### AIS support:

- Supports Class A and Class B messages via NMEA 0183 or NMEA 2000 input
- Calculates CPA and TCPA
- Graphically displays vessels in collision danger in bold
- Dead reckoning of AIS vessels between AIS updates
- Uses vessel Rate of Turn to plot curved course prediction path
- Vessels color coded and drawn to scale
- Sortable data grid of vessels showing vessel name, AIS class, MMSI #, vessel type, CPA, TCPA, range and bearing to vessel, speed, heading, COG, rate of turn, call sign, length, beam, draught, destination, IMON, ETA, last message age, and navigational status

### Data transfer:

- Supports waypoint, route and track transfer to and from;
  - GPX files
  - KMZ files
  - Lowrance .USR Ver 3 files
  - Raymarine .FSH files
  - Direct NMEA 0183 transfer
  - Direct WiFi connection to new Raymarine® e- and c- series MFDs
  - Direct cable connection to Raymarine SeaTalk<sup>hs</sup> networks
- Direct transfer and backup to the included Fugawi X-Traverse cloud
- One click upload of waypoints, routes and tracks to Facebook

**Free upgrades for 2 years**

For the latest detailed specifications please go to  
[marine5.fugawi.com](http://marine5.fugawi.com)

Fugawi Marine 5: FUGMAR-5; Instrument Add-on Suite: FUGMAR-5-IS.

**FUGAWI**<sup>TM</sup>  
KNOW WHERE YOU ARE GOING

# Fugawi™ Marine 5 Navigation streamlined

